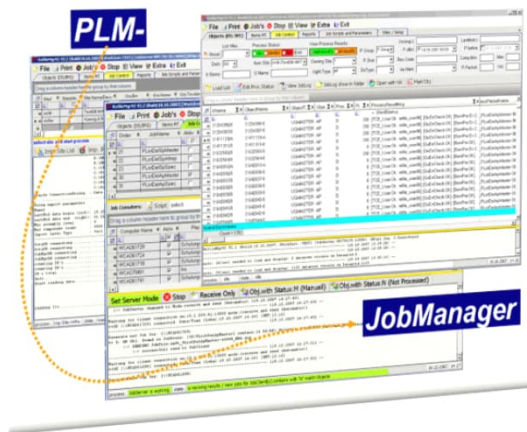
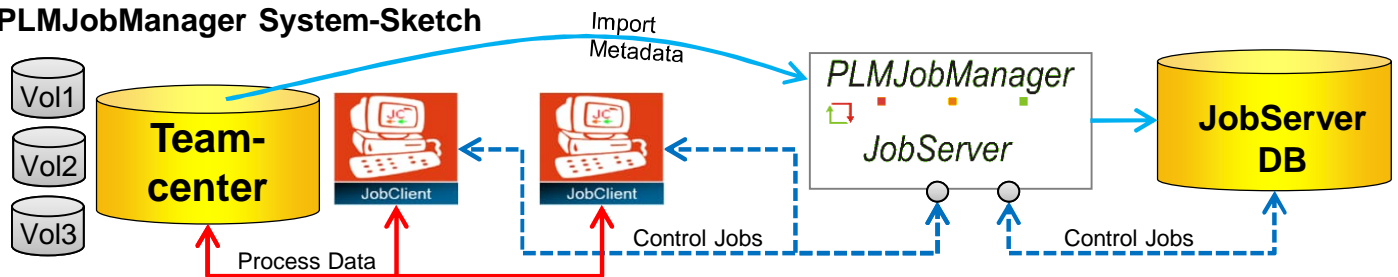


# addPLM – GmbH

*we automate PLM-Data processes*



## PLMJobManager System-Sketch



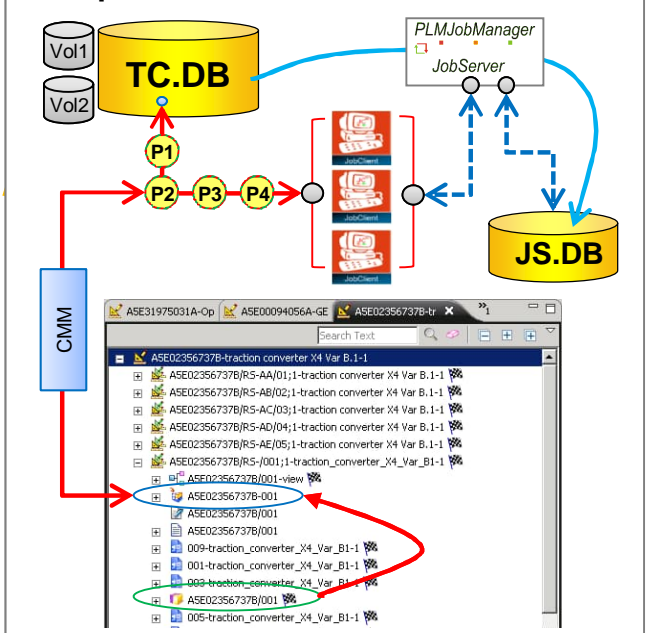
Scripts, Program config's  
and parameters

List of data to process  
@DB/4711/A ...  
@DB/4712/A ...

JobClients

Process Evaluation

## Example CMM



# addPLM – GmbH

*we automate PLM-Data processes*



Check if **NX-data**  
in the **new version**  
the same as in the  
**old version**?



Automation to update NX-Data  
via Part\_Utility.exe

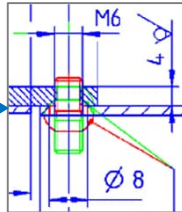
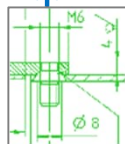
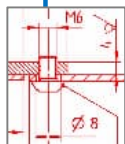
NX1992



NX2312



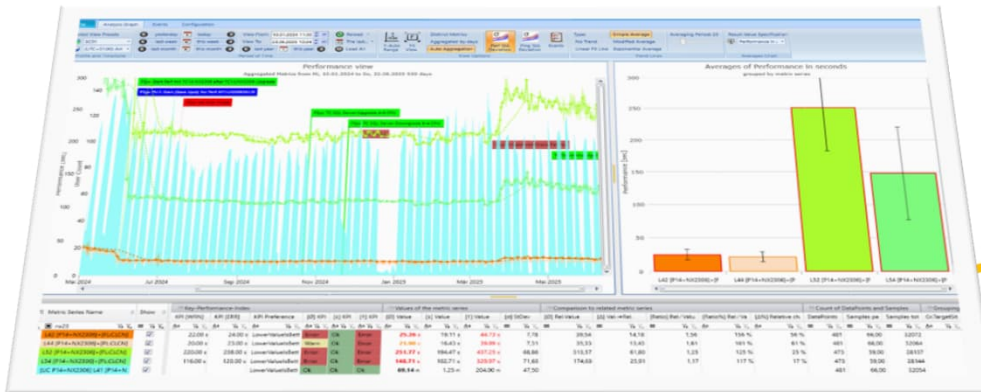
Compare



Part: 4711/A

Version	Save Time	Machine	User	Program
Loaded		NT x64		NX 2306.8701
45	01 Jun 2024 23:16	NT x64	NX	NX 2306.8701 (Part Utility)
44	13 Mai 2024 17:10	NT x64		NX 11.0.2.7 MP11, 23Aug18

**Solution for automated permanent performance measurements for NX in TC Environment**



**With this solution, you achieve:**

- Objectively assess system performance
- Identify all types of performance degradation
- Provide critical data to identify time-based performance issues

**addPLM business activities are in PLM environment.  
With a focus on Teamcenter and NX.**

**We deliver:**

**Products:**

- PLMJobManager
- PLM Performance Analyse

**Services:**

- Project analyses and consultation
- Project acquisition and realisation
- Project services and support

**For more details please contact:**

addPLM – GmbH

Person: Josef Feuerstein

Mail: [Josef.Feuerstein@addPLM.com](mailto:Josef.Feuerstein@addPLM.com)

Phone: +49-6682-9191-01

Web: [www.addPLM.com](http://www.addPLM.com)