

JobMgr Documentation Setup AutoStart

#LastUpdate: 17.02.2024

LastUpdate	Notes / Details								
17.02.2024	<p>Note: Please ensure that Methods documented below - 'AutoLogin' for Windows Host and AutoStart via TaskSheduler JobClient / JobServer - Can be used to AutoStart PLMJobManager applications at your organisation You may want to clarify this with your system security administrators.</p>								
17.02.2024	<p>JobMgr Toolbar entry 03-AutoStart.Setup:</p> <div><div><div>01-Install_and_Setup</div><div>02-WhatsNew</div><div>03-AutoStart.Setup</div><div>10-Documentation.Application</div><div>11-Documentation.Custom</div></div><div><div>01-Open PDF JobManager_Docu_AutoStart.pdf</div><div>02-Setup Win-Autologin User (via MS-Sysinternals Autologon64.exe - may need Win-Admin rights)</div><div>03-Setup JobMgr-Autostart Custom (via WIN Taskplaner)</div></div></div>								
09.02.2024 J.Fes	<p>SetUp Autologin JobMgr User</p> <p>Start Autologon64.exe via Link</p> <div><div>02-Setup Win-Autologin User (via MS-Sysinternals Autologon64.exe - may need Win-Admin rights)</div></div> <p>Insert User AutoLogin Data</p> <div><div><div>Autologon - Sysinternals</div><div><div>Username: #CustomJobMgrUser#</div><div>Domain: #CustomDomain#</div><div>Password:</div><div>Enable</div><div>Disable</div><div>About</div></div></div></div> <p>Click on button 'Enable' to activate the autologin for the set user. Click on button 'Disable' to deactivate the autologin at the active user.</p> <p>More Details see Application and Documentation at Web: Autologon - Sysinternals Microsoft Learn</p>								
17.02.2024	<p>SetUp AutoStart JobMgr Application via:</p> <p>Note: Before use: please ensure that AutoLogin to Windows Host is allowed at your organisation for Autostart JobClient / JobServer. You may want to clarify this with your system security administrators.</p> <p>Start Windows TaskSheduler via Link (C:\Windows\System32\taskschd.msc /s)</p> <div><div>03-Setup JobMgr-Autostart Custom (via WIN Taskplaner)</div></div> <div><table><tr><th>Step:</th><th>Details</th></tr><tr><td>1</td><td><p>Create Folder: addPLM</p><div><div>Task Scheduler</div><div><div>Task Scheduler (Local)</div><div><div>Task Scheduler Library</div><div>LANDESK</div><div>Microsoft</div><div>Mozilla</div><div>OfficeSoftwareProtect</div><div>Symantec Endpoint P</div><div>addPLM</div></div></div></div></td></tr><tr><td>2</td><td><p>Create Task:</p><div><div>addPLM</div><div>Create Basic Task...</div><div>Create Task...</div></div></td></tr><tr><td>3</td><td><p>Details Create the Task:</p></td></tr></table></div>	Step:	Details	1	<p>Create Folder: addPLM</p> <div><div>Task Scheduler</div><div><div>Task Scheduler (Local)</div><div><div>Task Scheduler Library</div><div>LANDESK</div><div>Microsoft</div><div>Mozilla</div><div>OfficeSoftwareProtect</div><div>Symantec Endpoint P</div><div>addPLM</div></div></div></div>	2	<p>Create Task:</p> <div><div>addPLM</div><div>Create Basic Task...</div><div>Create Task...</div></div>	3	<p>Details Create the Task:</p>
Step:	Details								
1	<p>Create Folder: addPLM</p> <div><div>Task Scheduler</div><div><div>Task Scheduler (Local)</div><div><div>Task Scheduler Library</div><div>LANDESK</div><div>Microsoft</div><div>Mozilla</div><div>OfficeSoftwareProtect</div><div>Symantec Endpoint P</div><div>addPLM</div></div></div></div>								
2	<p>Create Task:</p> <div><div>addPLM</div><div>Create Basic Task...</div><div>Create Task...</div></div>								
3	<p>Details Create the Task:</p>								

Task: General

The 'Create Task' dialog box is shown with the 'General' tab selected. The 'Name' field contains 'JobManagerAutostartCustom.cmd'. The 'Location' field contains '\\addPLM'. The 'Author' field contains 'EUR\\infodba'. The 'Description' field contains '\\#CustomPLMServer#\\#JobMgrRoot#\\JobManagerV3\\03-BinPublic.Custom\\JobManagerAutostartCustom.cmd'. The 'Security options' section shows 'When running the task, use the following user account:' with 'EUR\\infodba' selected. Below this, there are three radio buttons: 'Run only when user is logged on' (selected), 'Run whether user is logged on or not', and 'Do not store password. The task will only have access to local computer resources.' There are also checkboxes for 'Run with highest privileges' and 'Hidden'. The 'Configure for' dropdown is set to 'Windows Vista™, Windows Server™ 2008'. The 'OK' and 'Cancel' buttons are at the bottom right.

Task: General

General Triggers Actions Conditions Settings

Name: JobManagerAutostartCustom.cmd

Location: \\addPLM

Author: EUR\\infodba

Description: \\#CustomPLMServer#\\#JobMgrRoot#\\JobManagerV3\\03-BinPublic.Custom\\JobManagerAutostartCustom.cmd

Security options

When running the task, use the following user account:

EUR\\infodba Change User or Group...

☒ Run only when user is logged on

☐ Run whether user is logged on or not

☐ Do not store password. The task will only have access to local computer resources.

☐ Run with highest privileges

☐ Hidden Configure for: Windows Vista™, Windows Server™ 2008

OK Cancel

Task: Triggers:

The 'Create Task' dialog box is shown with the 'Triggers' tab selected. The 'When you create a task, you can specify the conditions that will trigger the task.' section is visible. Below this, there is a table with columns 'Trigger', 'Details', and 'Status'. The table contains one row: 'At log on', 'At log on of any user', and 'Enabled'. The 'Edit Trigger' dialog box is open over the 'Triggers' tab. The 'Edit Trigger' dialog box has a 'Begin the task:' dropdown set to 'At log on'. The 'Settings' section has three radio buttons: 'Any user', 'Specific user' (selected), and 'Change User...'. The 'Advanced settings' section has several checkboxes: 'Delay task for:' (checked, set to '1 minute'), 'Repeat task every:' (unchecked, set to '1 hour'), 'for a duration of:' (set to '1 day'), 'Stop all running tasks at end of repetition duration' (unchecked), 'Stop task if it runs longer than:' (unchecked, set to '3 days'), 'Activate:' (unchecked, set to '17.02.2024'), 'Expire:' (unchecked, set to '17.02.2025'), 'Synchronize across time zones' (unchecked), and 'Enabled' (checked). The 'OK' and 'Cancel' buttons are at the bottom right.

Task: Triggers:

Create Task

General Triggers Actions Conditions Settings

When you create a task, you can specify the conditions that will trigger the task.

Trigger	Details	Status
At log on	At log on of any user	Enabled

New...

Edit Trigger

Begin the task: At log on

Settings

☐ Any user

☒ Specific user: EUR\\infodba Change User...

Advanced settings

☒ Delay task for: 1 minute

☐ Repeat task every: 1 hour for a duration of: 1 day

☐ Stop all running tasks at end of repetition duration

☐ Stop task if it runs longer than: 3 days

☐ Activate: 17.02.2024 17:41:28 ☐ Synchronize across time zones

☐ Expire: 17.02.2025 17:41:28 ☐ Synchronize across time zones

☒ Enabled

OK Cancel

Task: Actions

The 'Create Task' dialog box is shown with the 'Actions' tab selected. The 'When you create a task, you must specify the action that will occur when your task starts.' section is visible. Below this, there is a table with columns 'Action' and 'Details'. The table contains one row: 'Start a program' and 'Edit Action'. The 'Edit Action' dialog box is open over the 'Actions' tab.

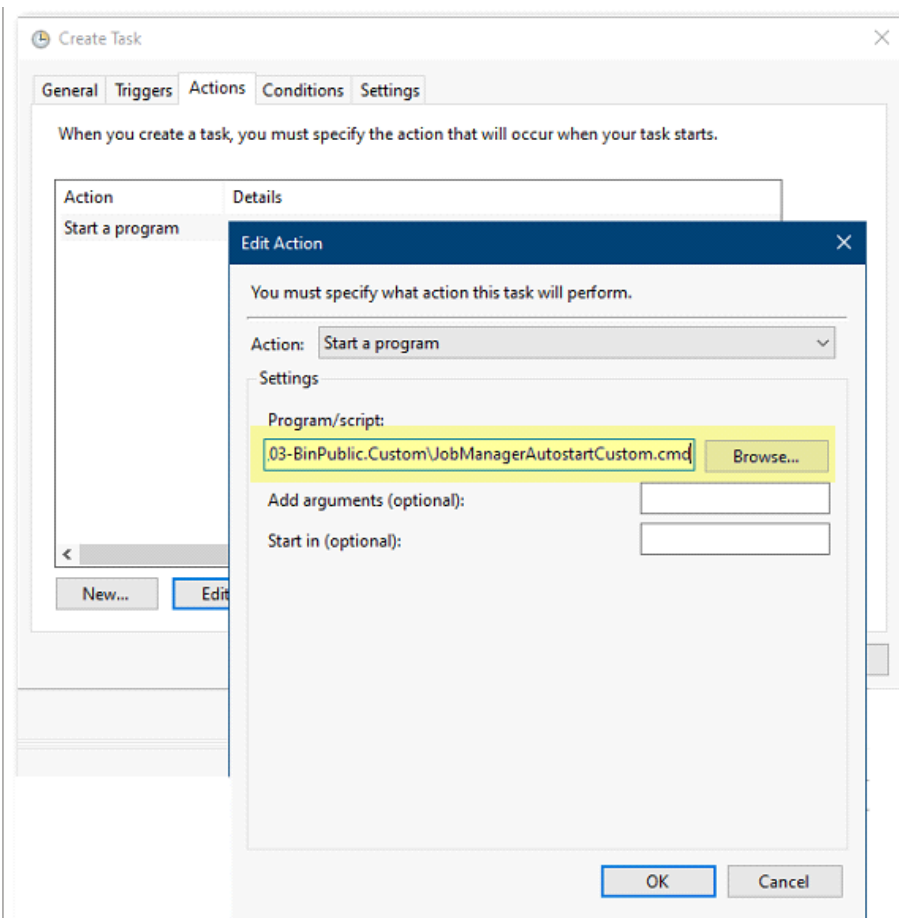
Task: Actions

Create Task

General Triggers Actions Conditions Settings

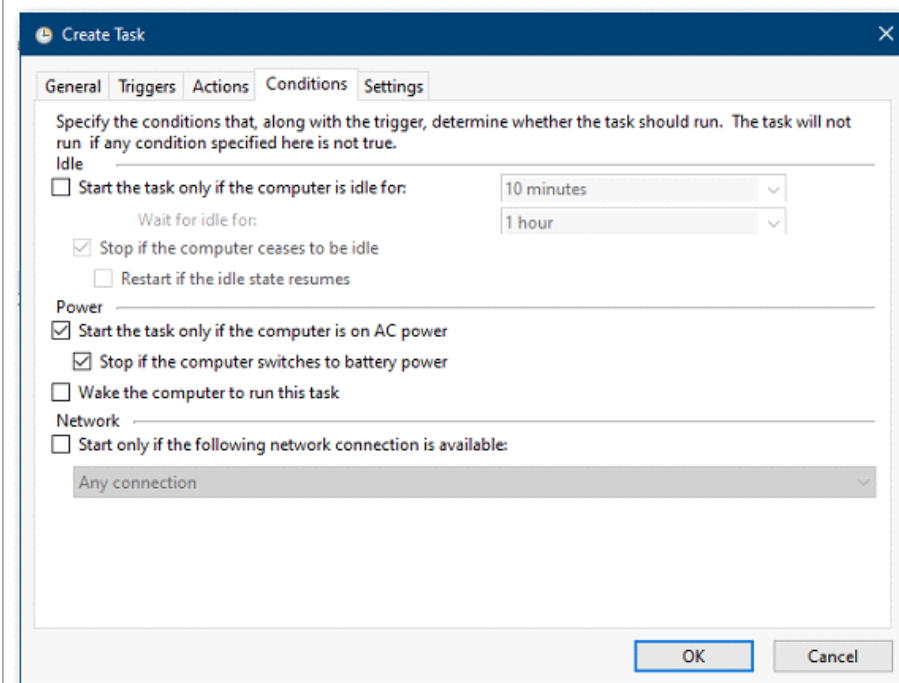
When you create a task, you must specify the action that will occur when your task starts.

Action	Details
Start a program	Edit Action



Important add into Program/script full **UNC** path to custom JobManagerAutostartCustom.cmd
[\\#CustomPLMServer#\#JobMgrRoot#\JobManagerV3\03-BinPublic.Custom\JobManagerAutostartCustom.cmd](#)

Task: Conditions



Task: Settings

Create Task

General Triggers Actions Conditions Settings

Specify additional settings that affect the behavior of the task.

☒ Allow task to be run on demand

☐ Run task as soon as possible after a scheduled start is missed

☐ If the task fails, restart every: 1 minute

Attempt to restart up to: 3 times

☐ Stop the task if it runs longer than: 3 days

☐ If the running task does not end when requested, force it to stop

☐ If the task is not scheduled to run again, delete it after: 30 days

If the task is already running, then the following rule applies:

Do not start a new instance

OK Cancel

01-JobManagerAutostartCustom via JobMgrStartViaTaskSheduler einrichten

Trigger bearbeiten

Aufgabe starten: Bei Anmeldung 1

Einstellungen

☐ Jeder Benutzer

☒ Bestimmter Benutzer: JF-DO2\jopp 2

Benutzer ändern...

Erweiterte Einstellungen

☒ Verzögern für: 1 Minuten

☐ Wiederholen jede: 1 Stunde für die Dauer von: 1 Tag

☐ Alle ausgeführten Aufgaben am Ende der Wiederholungsdauer beenden

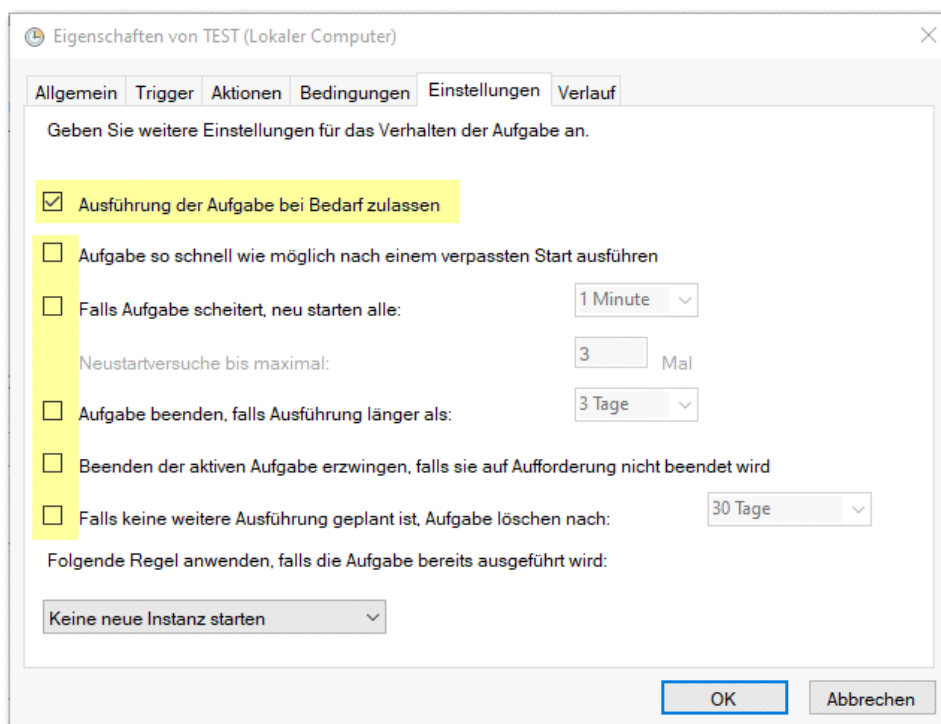
☐ Aufgabe beenden nach: 3 Tage

☐ Aktivieren: 07.02.2024 09:43:05 ☐ Zeitzoneübergreifende Synch.

☐ Ablaufen: 07.02.2025 09:43:05 ☐ Zeitzoneübergreifende Synch.

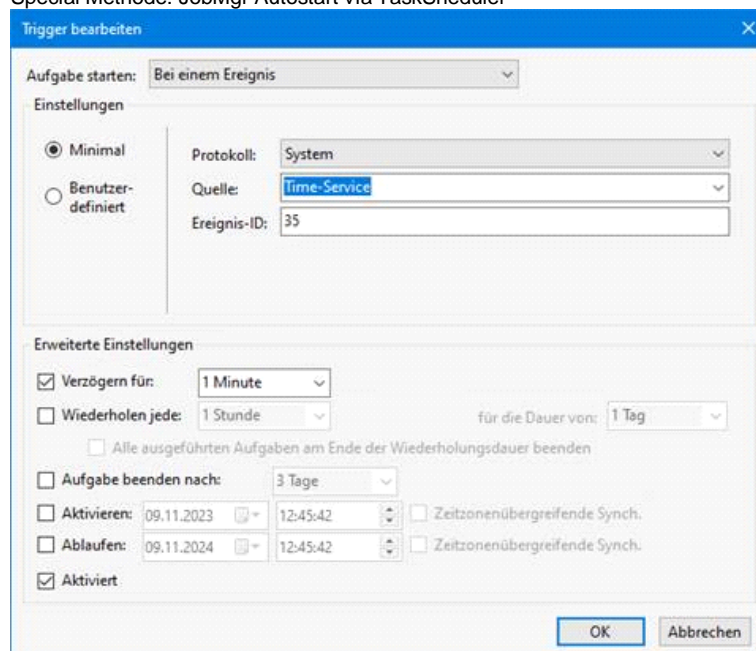
☒ Aktiviert

OK Abbrechen



10.11.2023

Special Methode: JobMgr Autostart via TaskSheduler



- Time-Service
- 35

17.02.2024
J.Fes

!! - - #ToDo for addPLM: - - !!

After Update this Documentation export this OneNote Page to .pdf file:
V:\JobManager\ProgEntw\Ver03\JobManagerV3\99-Install\JobMgrStartViaTaskSheduler\JobManager_Docu_AutoStart.pdf

Open/Edit this OneNote Document Page via:
[addPLM - Wiki](#) -> [11-JobMgr-Doc](#) -> [JobMgr_Documentation_Setup_AutoStart](#)