

CheckBox - Examples NX9 – NX11

Section of CheckBox Analyse

Check '-Single Parts-' '-Assembly Parts-'

- Part header compare
- Parts cannot be open in NX11

Check '-Single Parts-' (SP)

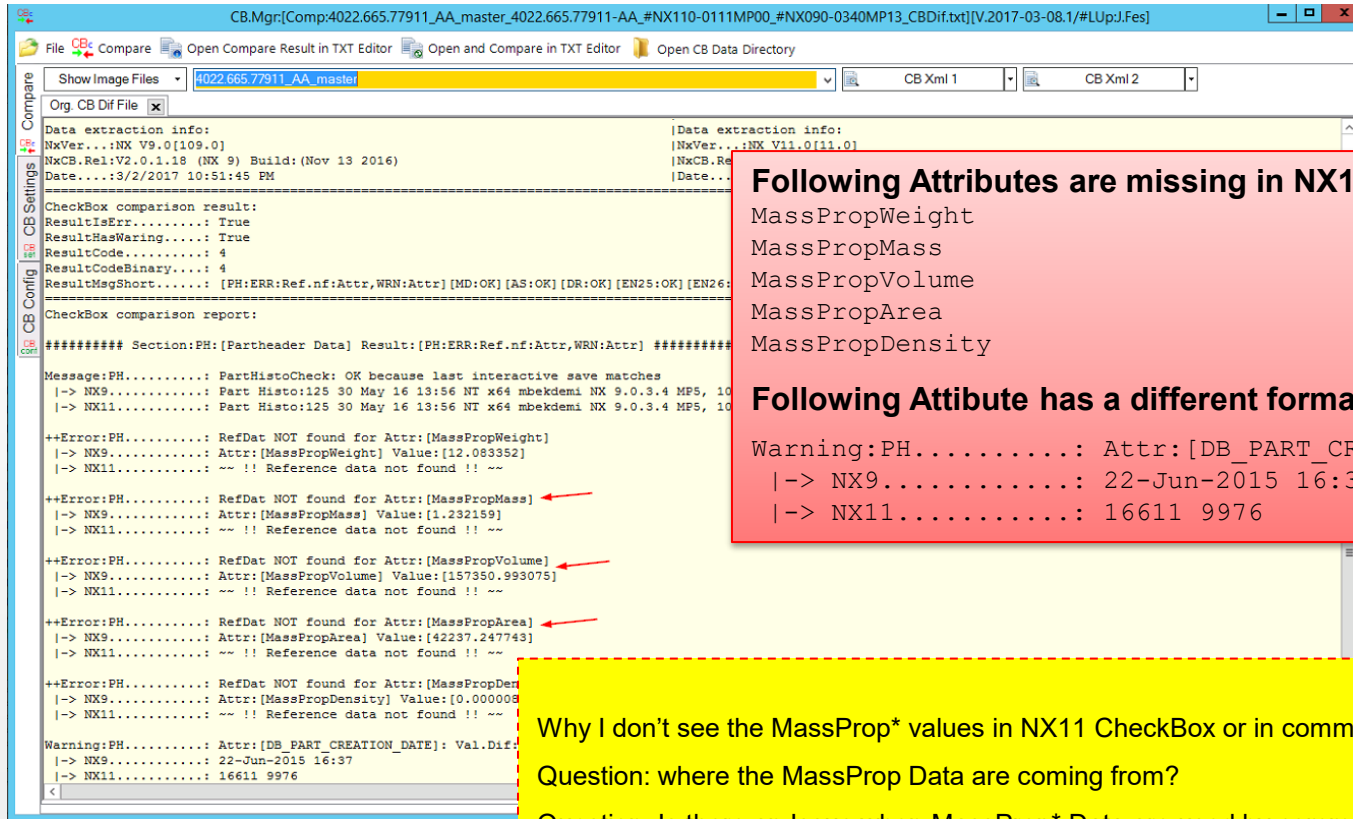
- Model compare
- Drawing compare

Check '-Assembly Parts-' (AP)

- Model compare
- Drawing compare
- Assembly compare

07.03.2017 SP: -> Parthead compare Attributes are missing in NX11

Example: ****.****_AA_master



Following Attributes are missing in NX11:

MassPropWeight
MassPropMass
MassPropVolume
MassPropArea
MassPropDensity

Following Attribute has a different format

Warning:PH.....: Attr:[DB_PART_CREATION_DATE]: Val.Dif:[Is not equal]
-> NX9.....: 22-Jun-2015 16:37
-> NX11.....: 16611 9976

Why I don't see the MassProp* values in NX11 CheckBox or in command line tools

Question: where the MassProp Data are coming from?

Question: Is there an Issue when MassProp* Data are used by command line tools? → also ask Bernd Schieber.

Conclusion Not a blocking Issue but need to be checked by Mr. Bernd Schieber and also send an Information to Erwin.

Selected	Gr.Key /	Gr.Name	Gr.Description	ITEM.Count	IR.Count	DS.Count	Obj.Count
<input checked="" type="checkbox"/>	Gr05.2	VDH.CB Issue	SP: -> Parthead compare Attributes are missing in NX11	0	0	339	339

Section of CheckBox Analyse

Check '-Single Parts-' '-Assembly Parts-'

- Part header compare
- Parts cannot be open in NX11

Check '-Single Parts-' (SP)

- Model compare
- Drawing compare

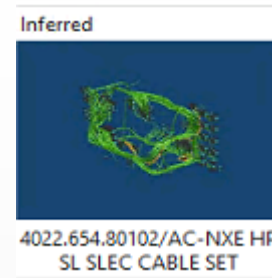
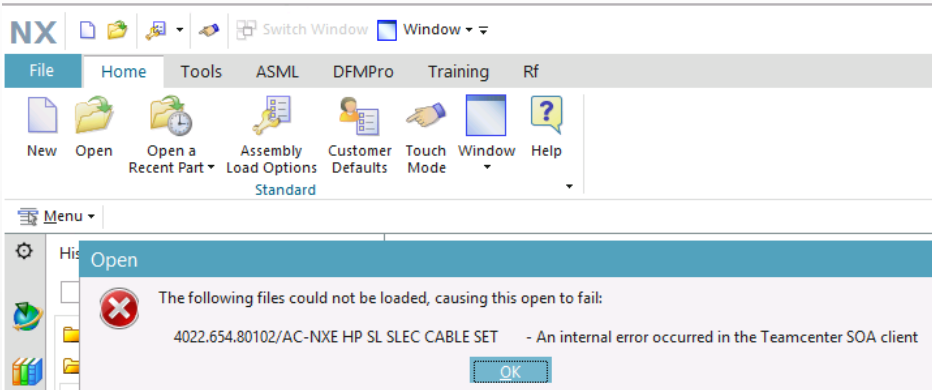
Check '-Assembly Parts-' (AP)

- Model compare
- Drawing compare
- Assembly compare

14.03.2017 – Issue AP Load in NX11

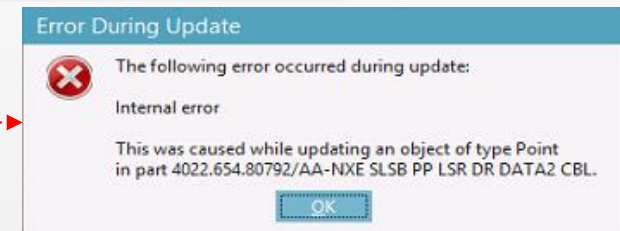
Example: ****.****/AC/****.

Test with NX11.1.0.11



#Info 14.03.2017
maybe fixed in MP1

Test with NX11.1.0.11 MP1



Test with NX11.1.0.11 MP1
Issue remains

Ir.Id	O Name	O Type	O Rel. State	O.LastModDate	O.Last	O.SP/	O.A	O.A	O.P.01	O.P.02	O.P.03	P.Res. Code
4022.654.80102/AC	110-001-01	UGPART	RELEASED	05/09/2016 09:23 AM	rukempen	AP	4	1982	D.ERR (Do...	D.ERR (Done)	D.ERR (chk)	CB-104
	4022.654.80102-AC	UGMASTER	RELEASED	06/06/2016 11:48 AM	rukempen				D.ERR (Do...	D.ERR (Done)	D.ERR (chk)	CB-104

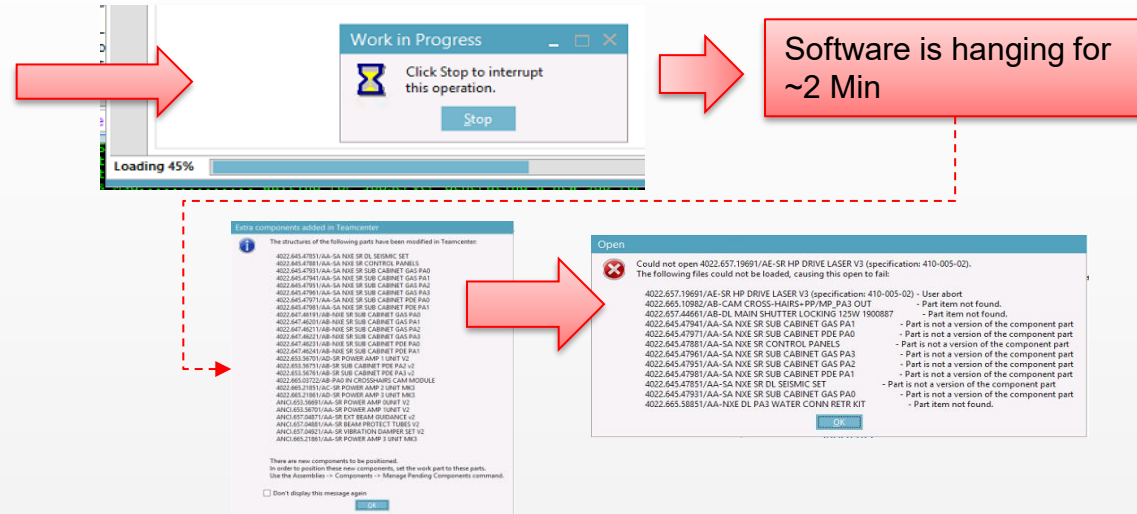
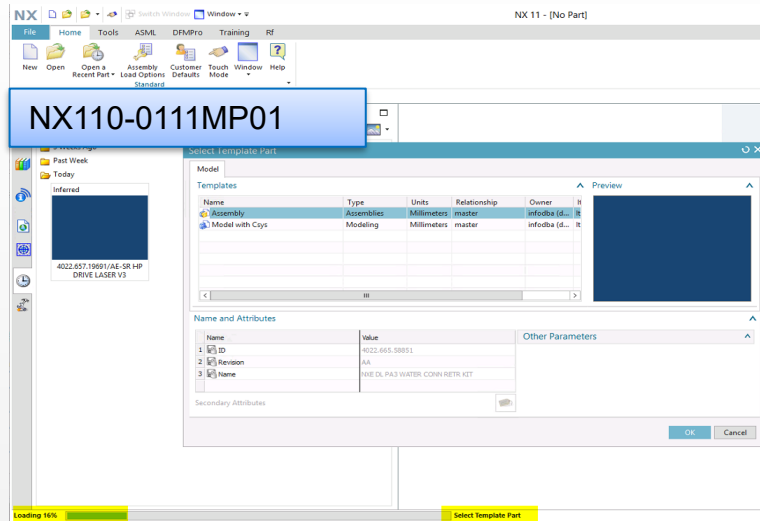
Grand Summaries	
Count = 2	
O.AP.LevN	4
O.Rel.State	RELEASED
O.P.01 [CB1.NK9]	D.ERR (Done)
O.P.02 [CB2.NK11]	D.ERR (Done)
O.P.03 [CB3.Comp NX9-NX11]	D.ERR (chk)
P.TimeStart	03/13/2017 07:25 AM
P.TimeEnd	03/13/2017 07:25 AM
P.Reg.Code	CB-104
P.Res.Mag	CB-FileError:CB-File1:[#NXK090-0940MP13:File:found] CB-File2:[#NX110-0111MP00:File:Not found!]

Assembly can NOT be loaded in
NX11

23.03.2017 – Issue AP Load in NX11

Example: **.****/AE UGPART**

During load the following message appears



In **NX9** it is possible to open the drawing but not with **NX11.0.11 MP1** but you are able to open the Drawings with load no components

Same or similar Issue with this Drawings

Drag a column header here to group by that column.

Ir.Id	O.Name	O.Type	O.S
4022.660.04702/AA	110-001-01	UGPART	
TOOL.648.04793/AA	TOOL.648.04793-AA	UGMASTER	
4022.660.13272/AA	110-003-01	UGPART	920
4022.657.19691/AE	410-003-02	UGPART	7 1023
	410-005-02	UGPART	
	410-010-02	UGPART	

4022.657.19691 is loadable after solving constraints in 4022.660.13272.

Section of CheckBox Analyse

Check '-Single Parts-' '-Assembly Parts-'

- Part header compare
- Parts cannot be open in NX11

Check '-Single Parts-' (SP)

- Model compare
- Drawing compare

Check '-Assembly Parts-' (AP)

- Model compare
- Drawing compare
- Assembly compare

16.03.2017 – SP: ERR:Refset.Vol,SolBod.Volume.Diff:>0.0001

Example: ****.XXX_AA_master

No issue after fixing edge blend (17)

CB.Mgr:[Comp:4022.655.28611_AA_master;4022.655.28611_AA_#NX110-0111MP00_#NX090-0340MP13_CBDif.txt][V.2017-03-08.1/#LUP]

File CB Compare Open Compare Result in TXT Editor Open and Compare in TXT Editor Open CB Data Directory

Show Image Files 4022.655.28611_AA_master CB Xml 1 CB Xml 2

Org. CB Dif File

ClName: @DB/4022.655.28611/AA/master/

PartHis: 41 08 Mar 17 05:06 NT x64 plmjobman NX 9.0.3.4 - External User Function

PartHis: 40 28 Oct 15 10:40 NT x64 alsegers NX 9.0.3.4 MP5, 10Feb15 (Last int.)

PartHis: 39 19 Nov 14 00:46 NT x64 imanupm NX 9.0.3.4 (NX Manager refile) MPI,

PartHis: 38 21 Nov 13 13:57 NT x64 alsegers NX 7.5.5.4

Data extraction info:

NxVer...:NX V9.0[109.0]

NxCB.Rel:V2.0.1.18 (NX 9) Build: (Nov 13 2016)

Date...:3/8/2017 5:06:47 AM

CheckBox comparison result:

ResultIsErr...: True

ResultHasWarning...: False

ResultCode...: 8

ResultMsgBinary...: 8

ResultMsgShort...: [PH:OK] [MD:ERR:Refset.Vol,SolBod.Volume.Diff:>0.0001] [AS:OK] [DR:OK] [EN25:OK] [EN26:OK] [DC:Tif:No.CGM] [PI:OK]

CheckBox comparison report:

Section:PH:[Parthead Data] Result:[PH:OK]

Message:PH...: PartHistoCheck: OK because last interactive save matches

|> NX9...: Part Histo:40 28 Oct 15 10:40 NT x64 alsegers NX 9.0.3.4 MP5, 10Feb15

|> NX11...: Part Histo:40 28 Oct 15 10:40 NT x64 alsegers NX 9.0.3.4 MP5, 10Feb15

Section:MD:[Model Data] Result:[MD:ERR:Refset.Vol,SolBod.Volume.Diff:>0.0001]

++Error:MD...: SolidBodies.Volume: Val.Dif:[Diff:>0.0001]

|> NX9...: 159076.164 mm^3

|> NX11...: 159075.848 mm^3

|> Difference...: ERROR because Diff.high:[0.316000>0.0001]

++Error:MD...: Refset.Volume #Info:Entry listed as warning because:'ModelBodysCheck' is already estimated by:PrototypeAnalysis:CoGrN1 or Mo

|> Object...: Refset:Entire Part

|> NX9...: 159076.164 mm^3

|> NX11...: 159075.848 mm^3

|> Difference...: ERROR because Diff.high:[0.316000>0.0001]

++Error:MD...: Refset.Volume #Info:Entry listed as warning because:'ModelBodysCheck' is already estimated by:PrototypeAnalysis:CoGrN1 or Mo

Ir.Id Σ# O.Name Σ# O.Type Σ# O.Rel.State Σ# O.LastModDate Σ# P.Inf Σ# P.TimeStart Σ# P.TimeEnd Σ# P.Res.CB:MD2 (Sol.Vol.dif) Σ# P.Res.CB:MD3 (Sol.Vol.%) Σ#

4022.655.28611/AA 4022.655.28611- 0 UGMASTER 10/28/2015 09:40 AM 03/08/2017 07:16 A 03/08/2017 07:16 0.31600000 0.00019900

More cases please see:

Gr:	Gr26	Search & List	Ed.P.State	View J.Log	J.Link	Open NX	Extra
Selected	Gr.Key	Gr.Name	Gr.Description	IT	IR	DS.Count	O
Gr26	VDH.ISSUE	SP: ERR:Refset.Vol,SolBod.Volume.Diff:>0.0001				202	

Question: Is it required to put down the tolerances?

07.03.2017 – Issue Refset.Volume Refset:Entire Part

Example: ****.XXXX_vc_master

Show Image Files 4022.478.00176_vc_master

Org. CB Dif File x

```

##### Section:MD:[Model Data] Result:[MD:ERR:Ref.nf:ModDB_Body,Refset.MOFIn,Refset.Vol,Refset.MomentOfInertia]
++Error:MD..... SolidBodies.Volume: Val.Dif:[Diff:>0.0001]
|-> NX9..... 1519678.556 mm^3
|-> NX11..... 11701538.774 mm^3
|-> Differnce..... ERROR because Diff.high:[10181860.218000>0.0001]

++Error:MD..... SolidBodies.Volume: Val.Dif:[Diff:>0.05%]
|-> NX9..... 1519678.556 mm^3
|-> NX11..... 11701538.774 mm^3
|-> Differnce..... ERROR because Deviation high:[87.013002% > 0.05%]

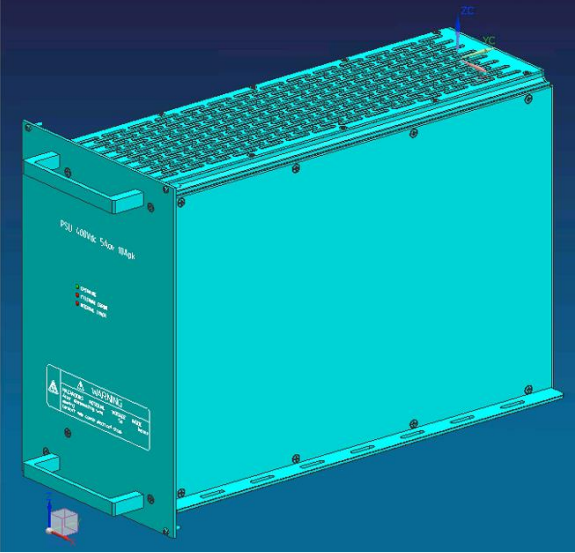
++Error:MD..... SolidBodies.VolumeBodys_n: Val.Dif:[Is not equal]
|-> NX9..... 77
|-> NX11..... 78

++Error:MD..... SolidBodies.CentreOfGravityN1 (!!--serious diff.--!! because Value is Normalized with
|-> NX9..... X:[3.708906] Y:[-18.267583] Z:[-10.584114]
|-> NX11..... X:[4.115712] Y:[-17.358608] Z:[-10.144486]
|-> Differnce..... ERROR because Diff.high:[1.088577>0.001]
|-> Differnce in... X.Dif:[-0.406806] Y.Dif:[-0.908975] Z.Dif:[-0.439628]
|-> 3D Dist..... 3D Dist:1.088577 of P1:[X:[3.708906] Y:[-18.267583] Z:[-10.584114]] <-> P2:[X:[4.115712] Y:[-17.358608] Z:[-10.144486]]

++Error:MD..... SolidBodies.MomentOfInertiaN1 (!!--serious diff.--!! because Value is Normalized with
|-> NX9..... X:[ 998387.993560] Y:[ 325787.794944] Z:[ 800770.133768]
|-> NX11..... X:[6557104.977357] Y:[2159498.645754] Z:[5130235.461531]
|-> Differnce..... ERROR because Diff.high:[7280528.827952>0.1]
|-> 3D Dist..... 3D Dist:7280528.827952 of P1:[X:[ 998387.993560] Y:[ 325787.794944] Z:[ 800770.133768]] <-> P2:[X:[6557104.977357] Y:[2159498.645754] Z:[5130235.461531]]

Warning:MD..... SolidBodies.MomentOfInertia #Info:Entry listed as warning because:'ModelBodysCheck' is
|-> NX9..... X:[7817308.323896] Y:[2551087.191731] Z:[6269869.609453]
|-> NX11..... X:[7817864.195595] Y:[2551270.562816] Z:[6270302.555986]
|-> Differnce..... ERROR because Diff.high:[728.052883>0.1]
|-> 3D Dist..... 3D Dist:728.052883 of P1:[X:[7817308.323896] Y:[2551087.191731] Z:[6269869.609453]] <-> P2:[X:[7817864.195595] Y:[2551270.562816] Z:[6270302.555986]]

```



Issue: Volume in Refset Model differs!!

Possible Reason: More SolidBodys are evaluatet in NX11

An extrude feature fails in NX 9 when the part is updated using Feature Playback. NX 11 has no failure. In fact Improvement in NX

More cases please see:

Gr: Gr05.1

Selected	Gr.Key	Gr.Name
<input checked="" type="checkbox"/>	Gr05.1	VDH
<input type="checkbox"/>		SolBod.VolumePercentage.Diff.>0.05%

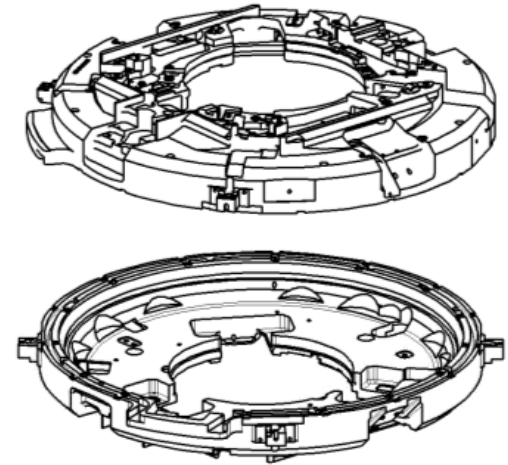
16.03.2017 – SP: ERR:Refset.Vol,SolBod.Volume.Diff:>0.0001

Example: ****.XXXX_AA_master

```

CB.Mgr:[Comp:4022.637.16145_AA_master_4022.637.16145-AA_#NX110-0111MP00_#NX090-0340MP13_CBDif.txt][V.2017-
File CB Compare Open Compare Result in TXT Editor Open and Compare in TXT Editor Open CB Data Directory
Show Image Files 4022.637.16145_AA_master CB Xml 1
Org. CB Dif File x
##### Section:MD:[Model Data] Result:[MD:ERR:Refset.MofIn,Refset.Vol,SolBod.MofInN1.Diff:>0.1,SolBod.Volume.Dif
++Error:MD..... SolidBodies.Volume: Val.Dif:[Diff:>0.0001]
|-> NX9..... 5109718.567 mm^3
|-> NX11..... 5109718.869 mm^3
|-> Difference..... ERROR because Diff.high:[0.302000>0.0001]
++Error:MD..... SolidBodies.MomentOfInertiaN1 (!!--serious diff.--!! because Value is Normalized with Density=
|-> NX9..... X:[1743082.357106] Y:[1720408.328395] Z:[3095343.930211]
|-> NX11..... X:[1743082.452748] Y:[1720408.423979] Z:[3095344.075140]
|-> Difference..... ERROR because Diff.high:[0.198212>0.1]
|-> 3D Dist..... 3D Dist:0.198212 of P1:[X:[1743082.357106] Y:[1720408.328395] Z:[3095343.930211]] <-> P2:[X:[1
Warning:MD..... SolidBodies.MomentOfInertia #Info:Entry listed as warning because:'ModelBodysCheck' is already
|-> NX9..... X:[4636599.069903] Y:[4576286.153531] Z:[8233614.854362]
|-> NX11..... X:[4636599.324308] Y:[4576286.407783] Z:[8233615.239872]
|-> Difference..... ERROR because Diff.high:[0.527242>0.1]
|-> 3D Dist..... 3D Dist:0.527242 of P1:[X:[4636599.069903] Y:[4576286.153531] Z:[8233614.854362]] <-> P2:[X:[4
++Error:MD..... Refset.Volume #Info:Entry listed as warning because:'ModelBodysCheck' is already estimated by:
|-> Object..... Refset:Entire Part
|-> NX9..... 5109718.567 mm^3
|-> NX11..... 5109718.869 mm^3
|-> Difference..... ERROR because Diff.high:[0.302000>0.0001]

```



P.Res.CB:MD2 (Sol.Vol.dif)	Σ	P.Res.CB:MD3 (Sol.Vol.%)
0.30200000		0.00000600

Analyse:

Part is quit complex and has no Issues in Drawings

IR 8818538

No issue if accuracy is increased

Section of CheckBox Analyse

Check '-Single Parts-' '-Assembly Parts-'

- Part header compare
- Parts cannot be open in NX11

Check '-Single Parts-' (SP)

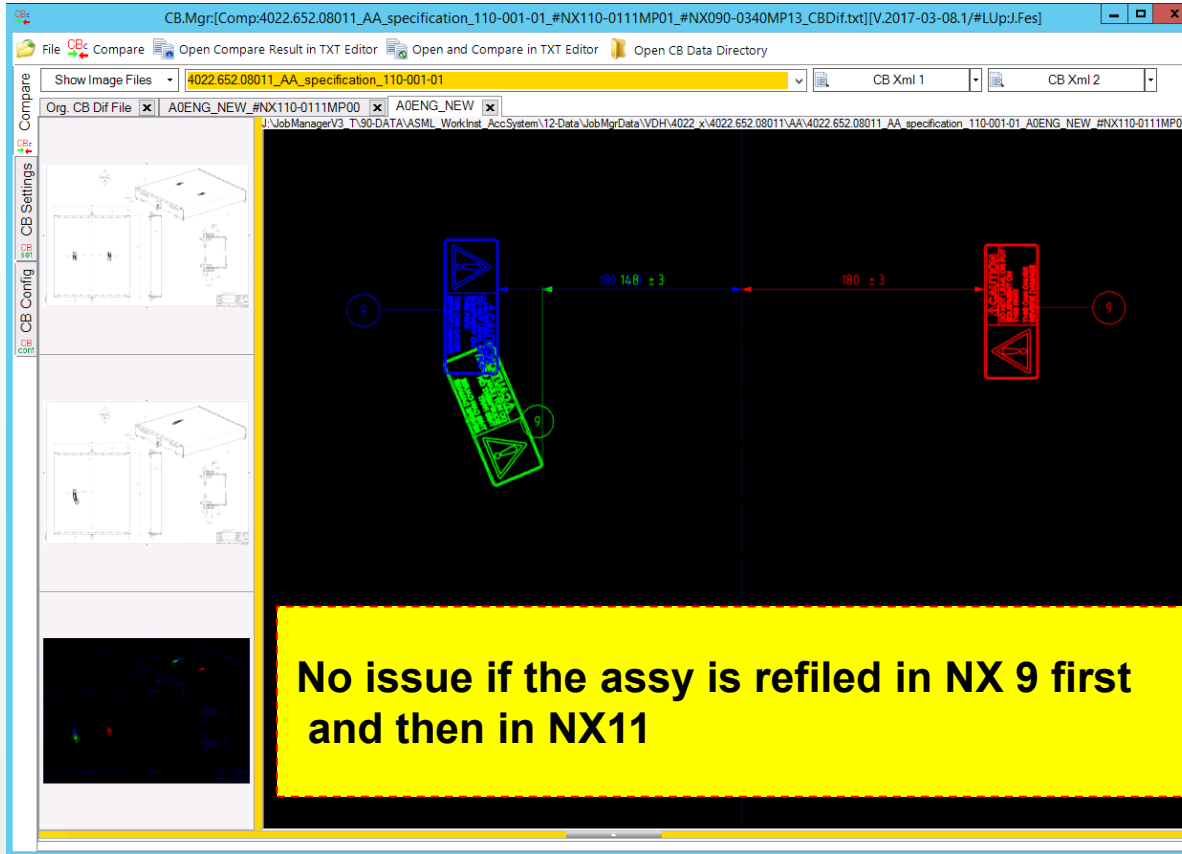
- Model compare
- Drawing compare

Check '-Assembly Parts-' (AP)

- Model compare
- Drawing compare
- Assembly compare

15.03.2017 – Compare SP Drawing / Dimension Issue

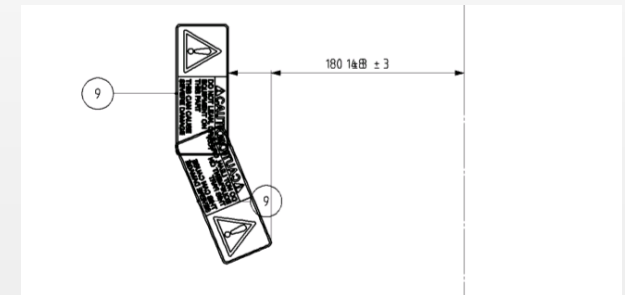
Example: ****.xxxx_specification_110-001-01



NX9



NX110-0111MP01



Analyse:
Issue Labels are Moving in NX11

More cases please see:

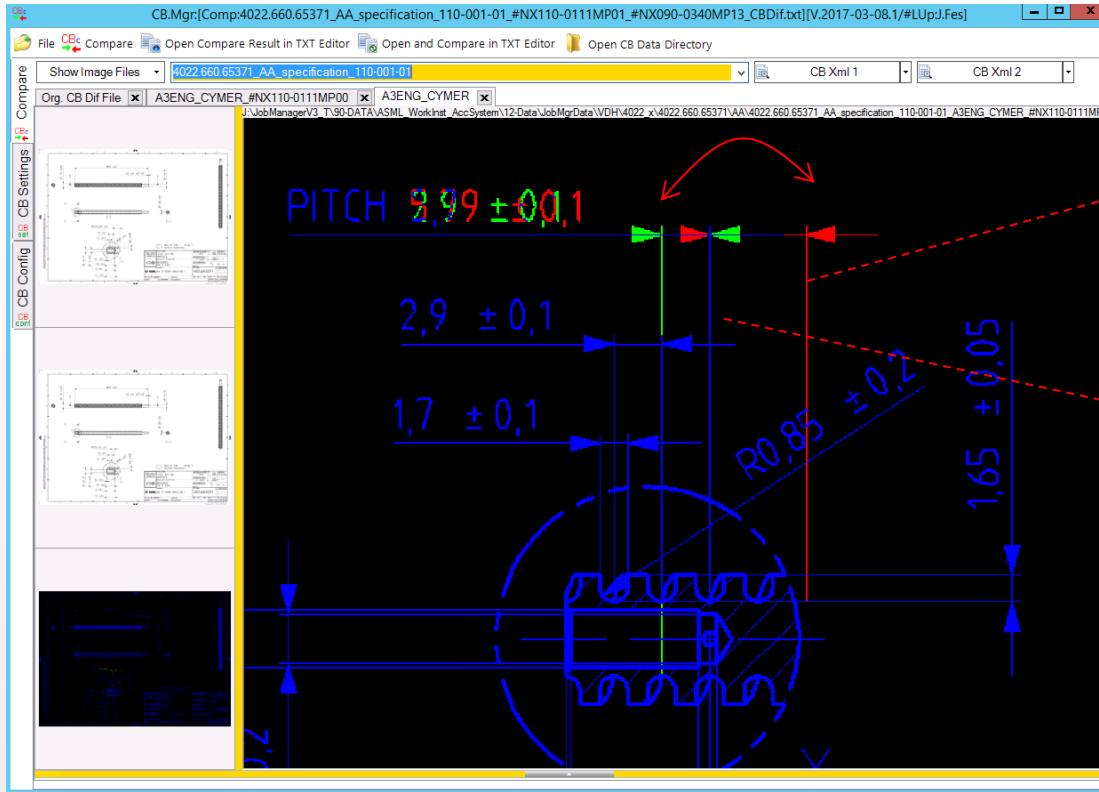
Gr:	Gr25	Search & List	Ed.P.State	View J.Log	J.Link	Open NX
Selected	Gr.Key	Gr.Name	Gr.Description	IT	IR	DS.Count
<input checked="" type="checkbox"/>	Gr25	VDH.ISSUE	EN26:ERR.Txt.ValChanged DIM Vaue changed	<input checked="" type="checkbox"/>	<input checked="" type="checkbox"/>	17

15.03.2017 – Compare SP Drawing / Dimension Issue

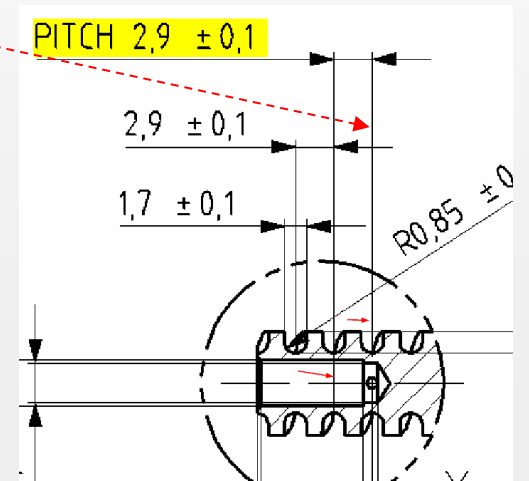
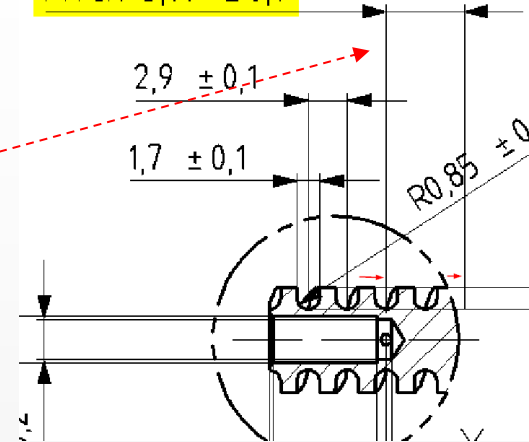
Example: ****.xxxx_specification_110-001-01

NX9

PITCH 5,79 ± 0,1



NX110-0111MP01



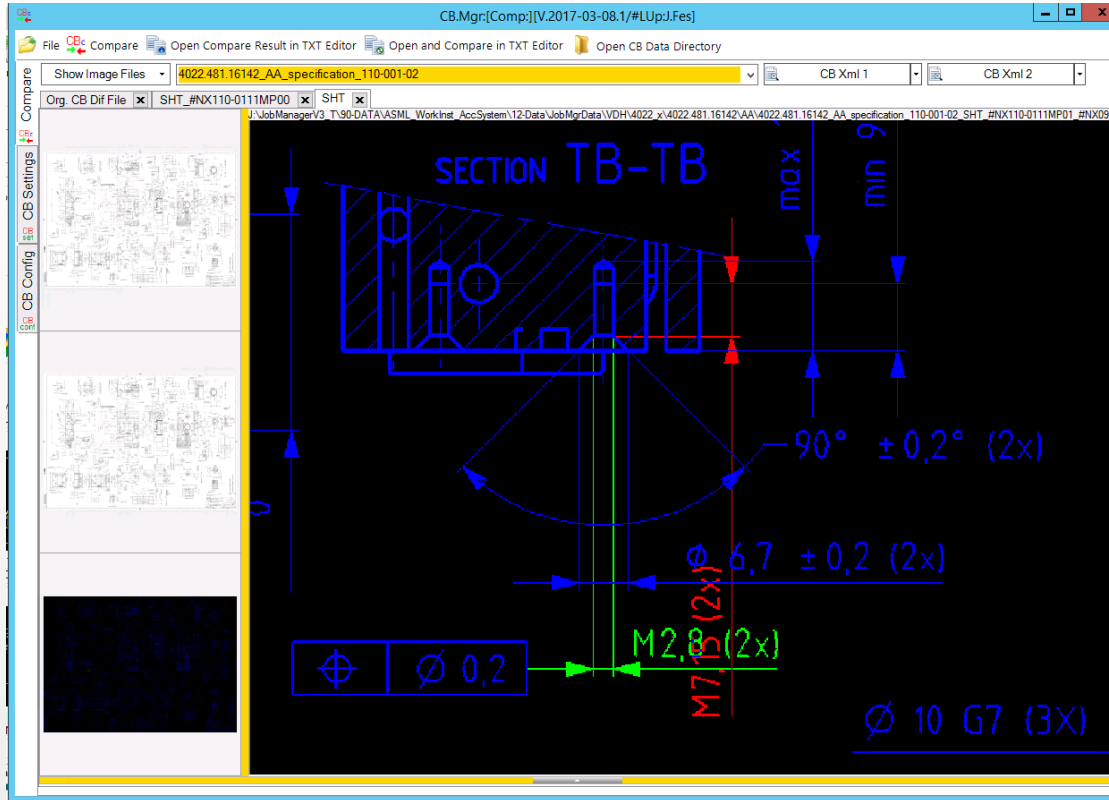
More cases please see:

Gr.	Gr25	Search & List	Ed.P.State	View J.Log	J.Link	Open NX
Selected	Gr.Key	Gr.Name	Gr.Description	IT	IR	DS.Count
<input checked="" type="checkbox"/>	Gr25	VDH.ISSUE	EN26:ERR.Txt.ValChanged DIM Vaue changed	<input checked="" type="checkbox"/>	<input checked="" type="checkbox"/>	17

Analyse:
Dim Value unknow waths right?

15.03.2017 – Compare SP Drawing / Dimension Issue

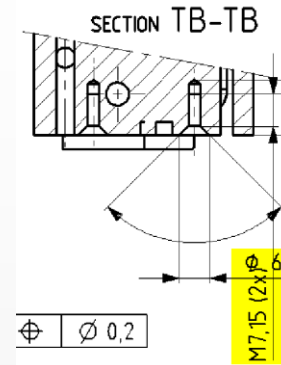
Example: ****.xxxx_AA_specification_110-001-02



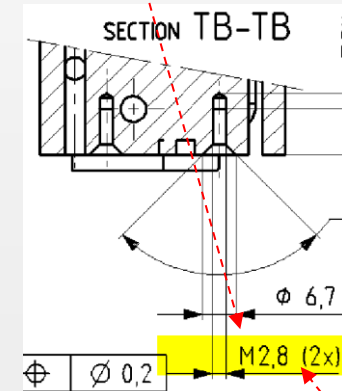
More cases please see:

Gr:	Gr25	Search & List	Ed.P.State	View J.Log	J.Link	Open NX
Selected	Gr.Key	Gr.Name	Gr.Description	IT	IR	DS.Count
<input checked="" type="checkbox"/>	Gr25	VDH.ISSUE	EN26:ERR.Txt.ValChanged DIM Vaue changed	<input checked="" type="checkbox"/>	<input checked="" type="checkbox"/>	17

NX9



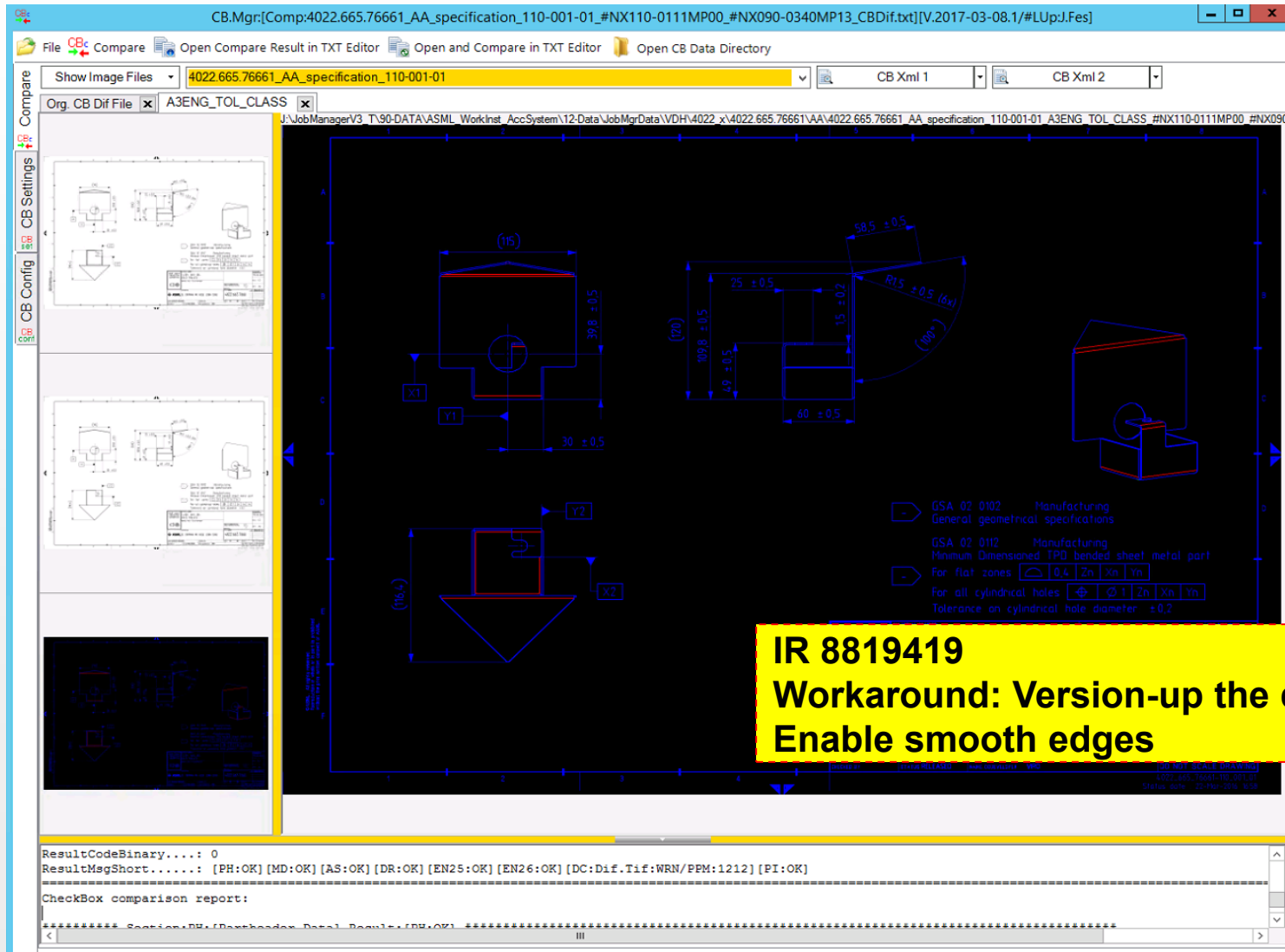
NX11



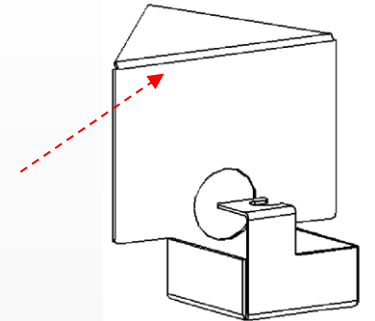
Analyse:
Dim looks in NX11 more OK but M2,8??

17.03.2017 – Compare SP Drawing Silhouettes lines are missing on sheet metal bodys

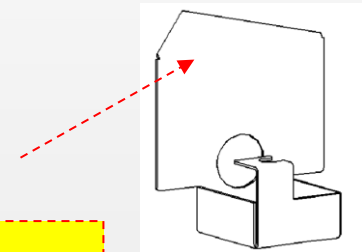
Example: ****.xxxx_AA_specification_110-001-01



NX090-0340MP13

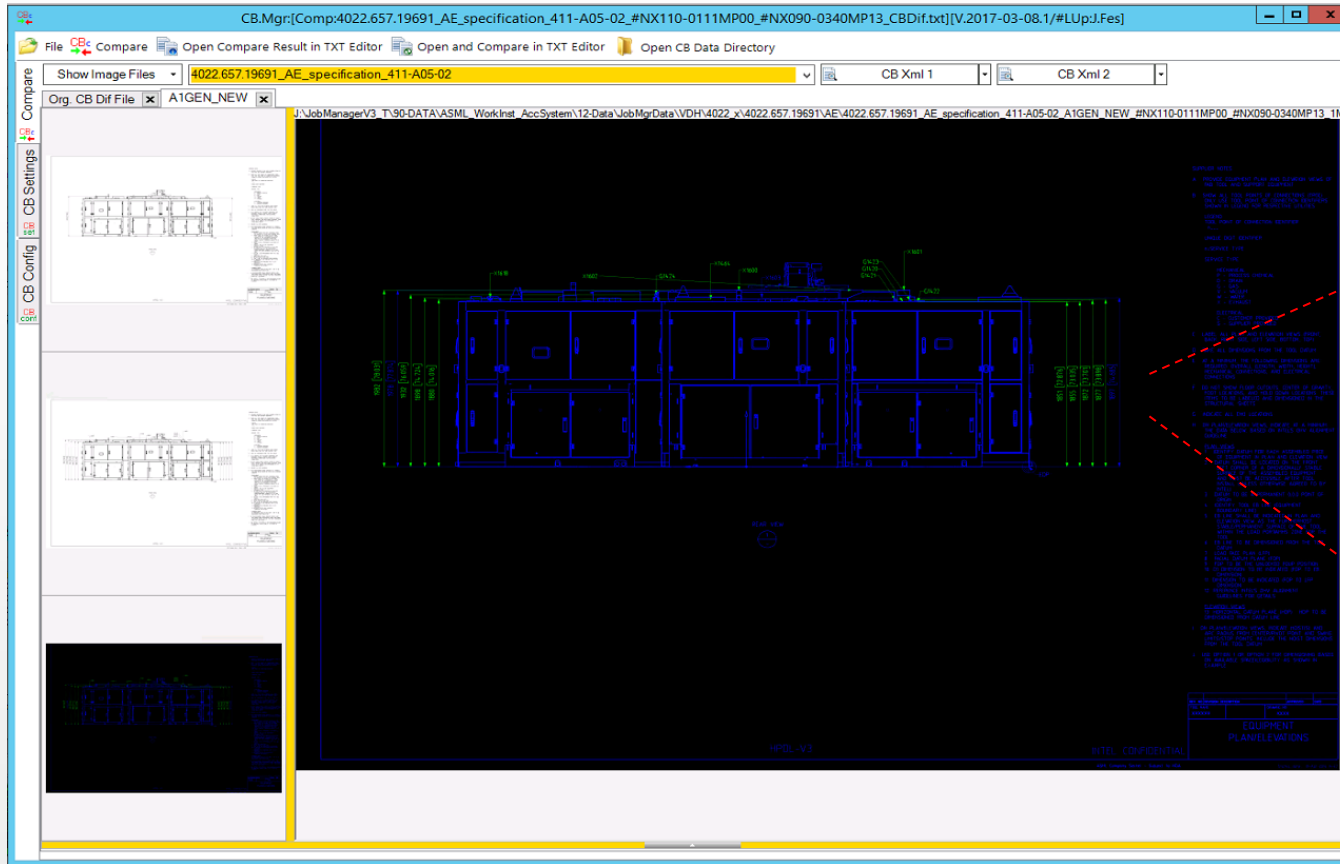


NX110-0111MP01

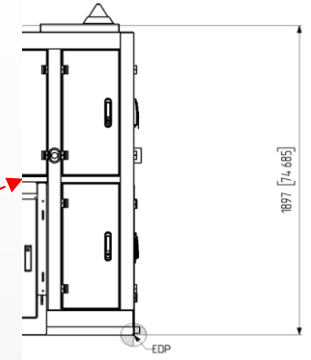


17.03.2017 – Compare SP Dimenstions

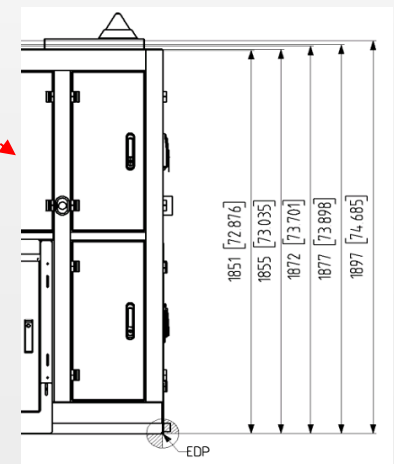
Example: ****.657.19691/AE



NX090-0340MP13



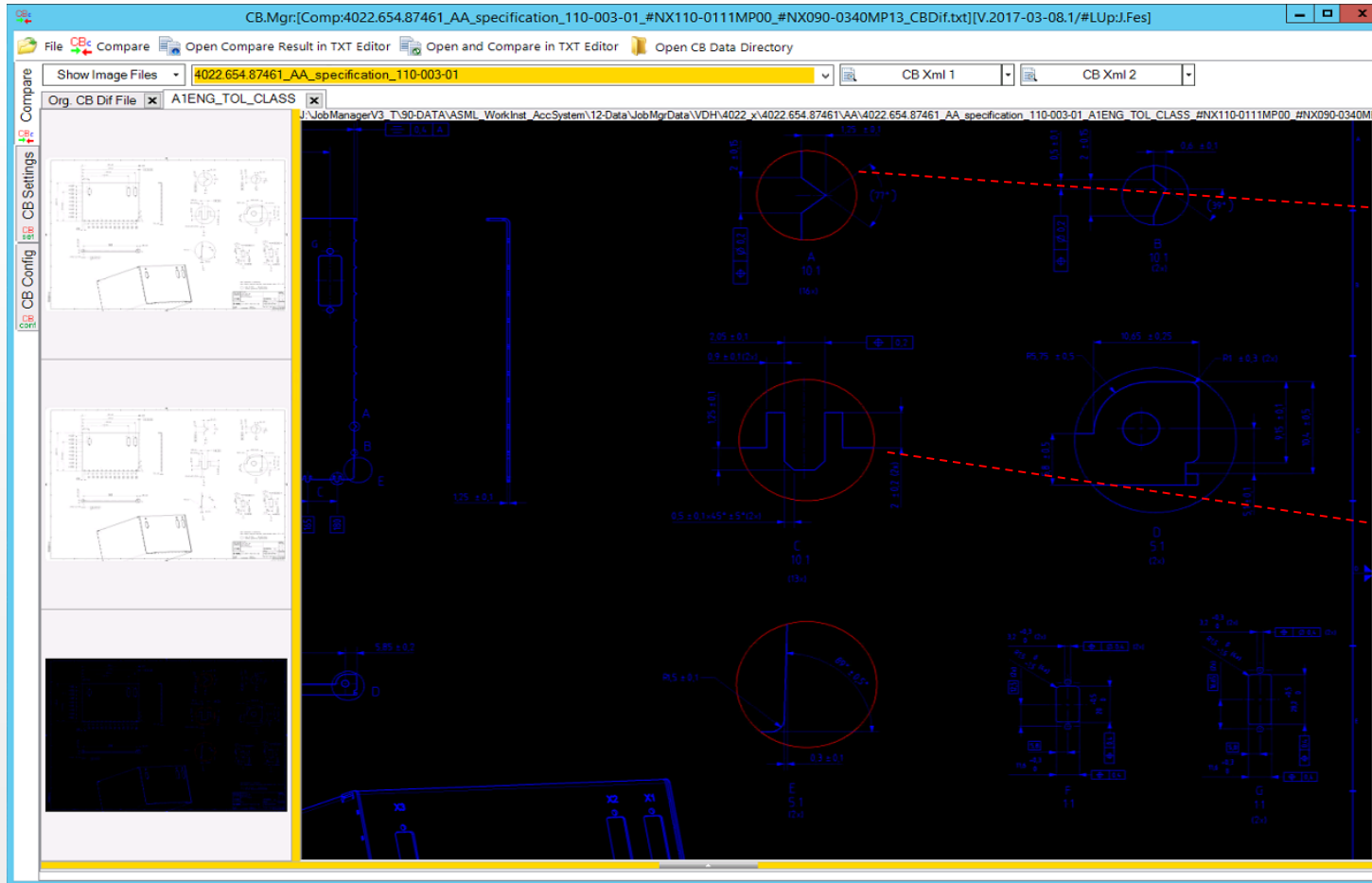
NX110-0111MP00



More Dimensions in NX11??

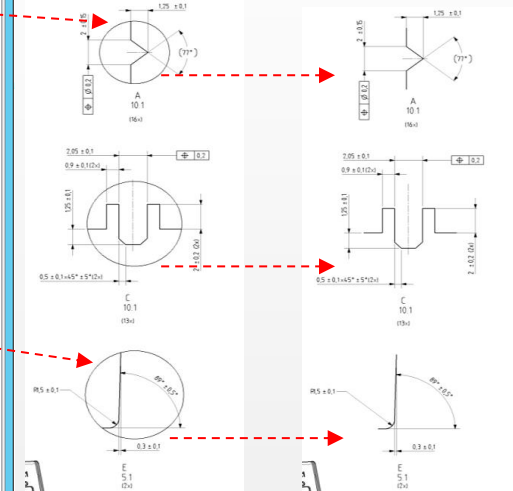
20.03.2017 – Drawing View Borders are missing in NX11

Example: ****.xxxx_AA_specification_110-003-01



NX090-0340MP13

NX110-0111MP01

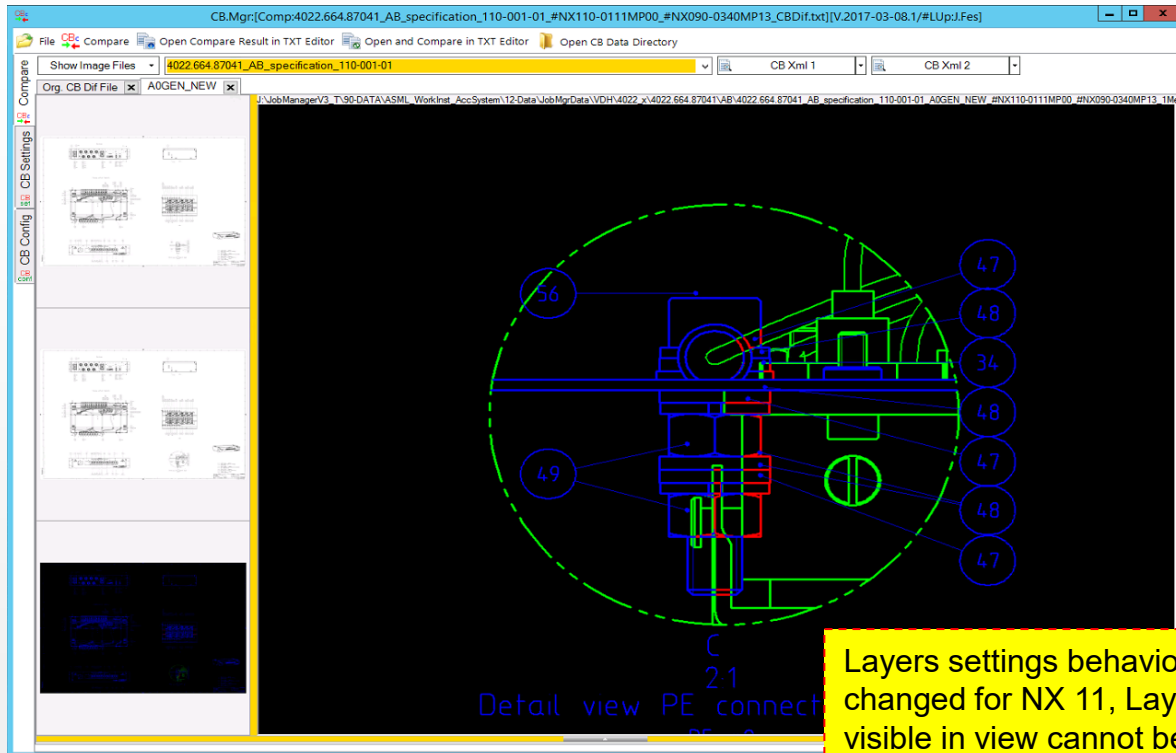


Issue: Drawing View Borders are missing in NX11

IR 8819521
No fix, only workaround

20.03.2017 – Drawing view shows different content

Example: ****.xxxx_AB_specification_110-001-01

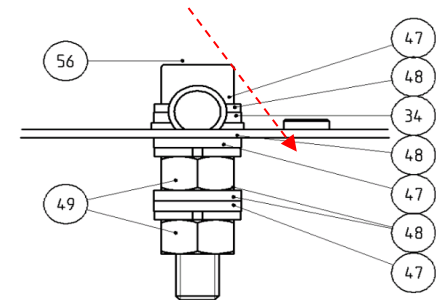


Need to be checked what are the wished content in view

IR 8819521
No fix expected
Only workaround

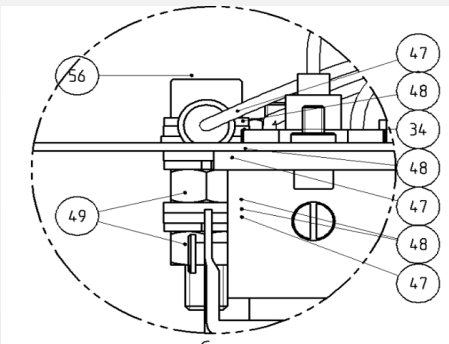
Layers settings behavior changed for NX 11, Layers visible in view cannot be different b/w parent and detail view (dependent). In NX 9 it is possible to have different layers switched ON b/w parent view and it's detail view (dependent). Need to raise an IR if it is intended functionality ?

NX090-0340MP13



C
2:1
Detail view PE connector plate

NX110-0111MP01



C
2:1
Detail view PE connector plate

Section of CheckBox Analyse

Check '-Single Parts-' '-Assembly Parts-'

- Part header compare
- Parts cannot be open in NX11

Check '-Single Parts-' (SP)

- Model compare
- Drawing compare

Check '-Assembly Parts-' (AP)

- Model compare
- Drawing compare
- Assembly compare

24.03.2017 – Issue Assembly Compare

Overview ISSUES found where Assembly Volume more then 0.01%

1*

PG: P03 [CB3.Comp NX9-N] P.Stat: Gr: Gr32 Search & List Ed.P.State View J.Log J.Link Open NX Extra

Drag a column header here to group by that column.

Ir.Id	O.Name	Ir.Rank	O.Type	O.SP/	O.Σ	O.Σ	O.P.01	O.P.02	O.P.03	P.Res.Code	P.Res.CB:M	P.Res.CB:MD3 (Sol.Vol.%)
4022 664.42121/AC	4022 664.42121-AC	0	UGMASTER				D.OK (Done)	D.OK (Done)	D.RUNC2.ERR		45.24800000	0.06421400
4022 472.85372/AA	4022 472.85372-AA	0	UGMASTER				22 D.OK (Done)	D.OK (Done)	D.ERR (lchk)		24.48800000	0.03280400
4022 623.41501/AA	4022 623.41501-AA	0	UGMASTER				23 D.OK (Done)	D.OK (Done)	D.ERR (lchk)		7.79400000	0.04718900
4022 636.42501/AA	4022 636.42501-AA	0	UGMASTER				D.OK (Done)	D.OK (Done)	D.ERR (lchk)		60.61200000	0.07931000
4022 654.67891/AA	4022 654.67891-AA	0	UGMASTER				D.OK (Done)	D.OK (Done)	D.ERR (lchk)		467.61400000	0.13133400
4022 636.14573/AA	4022 636.14573-AA	0	UGMASTER				24 D.OK (Done)	D.OK (Done)	D.ERR (lchk)		12.55100000	0.05069200
4022 636.14593/AA	4022 636.14593-AA	0	UGMASTER				D.OK (Done)	D.OK (Done)	D.ERR (lchk)		2.64700000	0.01015400
4022 646.03641/AC	4022 646.03641-AC	0	UGMASTER				D.OK (Done)	D.OK (Done)	D.RUNC2.ERR		60.49100000	0.01611300
4022 664.04851/AA	4022 664.04851-AA	0	UGMASTER				D.OK (Done)	D.OK (Done)	D.ERR (lchk)		4.80100000	0.01135800
4022 664.04891/AA	4022 664.04891-AA	0	UGMASTER				D.OK (Done)	D.OK (Done)	D.ERR (lchk)		2.55200000	0.01054100
4022 636.14583/AA	4022 636.14583-AA	0	UGMASTER				25 D.OK (Done)	D.OK (Done)	D.ERR (lchk)		7.90200000	0.02694000
4022 472.55981/AA	4022 472.55981-AA	0	UGMASTER				26 D.OK (Done)	D.OK (Done)	D.ERR (lchk)		43.26900000	0.02210100
4022 646.03443/AB	4022 646.03443-AB	0	UGMASTER				D.OK (Done)	D.OK (Done)	D.RUNC2.ERR		17.27300000	0.01641600
4022 472.42281/AA	V345157-AA	0	UGMASTER				27 D.OK (Done)	D.OK (Done)	D.ERR (lchk)		15.97200000	0.02367800
4022 472.33982/AA	4022 472.33982-AA	0	UGMASTER				28 D.OK (Done)	D.OK (Done)	D.ERR (lchk)		392.02900000	0.11760800
4022 654.51871/AA	4022 654.51871-AA	0	UGMASTER				D.OK (Done)	D.OK (Done)	D.RUNC2.ERR		2.65500000	0.02235700
4022 664.33271/AA	4022 664.33271-AA	0	UGMASTER				D.OK (Done)	D.OK (Done)	D.RUNC2.ERR		61.85400000	0.08234000
4022 646.26581/AA	4022 646.26581-AA	0	UGMASTER				29 D.OK (Done)	D.OK (Done)	D.ERR (lchk)		12.03800000	0.02714900
4022 646.26761/AA	4022 646.26761-AA	0	UGMASTER				D.OK (Done)	D.OK (Done)	D.ERR (lchk)		5.85300000	0.01213900
4022 646.61953/AA	4022 646.61953-AA	0	UGMASTER				D.OK (Done)	D.OK (Done)	D.ERR (lchk)		29.25000000	0.04298500
4022 640.64121/AA	4022 640.64121-AA	0	UGMASTER				34 D.OK (Done)	D.OK (Done)	D.ERR (lchk)		54.82100000	0.22313500

Grand Summaries Count = 172

Solid Body geometry difference **absolute**

Solid Body geometry difference in %

Gr: Gr32 Search & List Ed.P.State View J.Log J.Link Open NX Extra

Selected	Gr.Key	Gr.Name	Gr.Description	IT	IR	DS.Count	O
<input checked="" type="checkbox"/>	Gr32	VDH.ISSUE	AS: with "ERR:"SolBod.Volume.Diff:>0.0001"	<input checked="" type="checkbox"/>	<input checked="" type="checkbox"/>	172	<input checked="" type="checkbox"/>

Analyse:

We found 172 Assembly where SolidBody of Assembly are differs
It is needed to check why SolidBody are differs in NX11

All the cases I have looked in have been cases with wires and cables assembly's.

Section of CheckBox Analyse

Check '-Single Parts-' '-Assembly Parts-'

- Part header compare
- Parts cannot be open in NX11

Check '-Single Parts-' (SP)

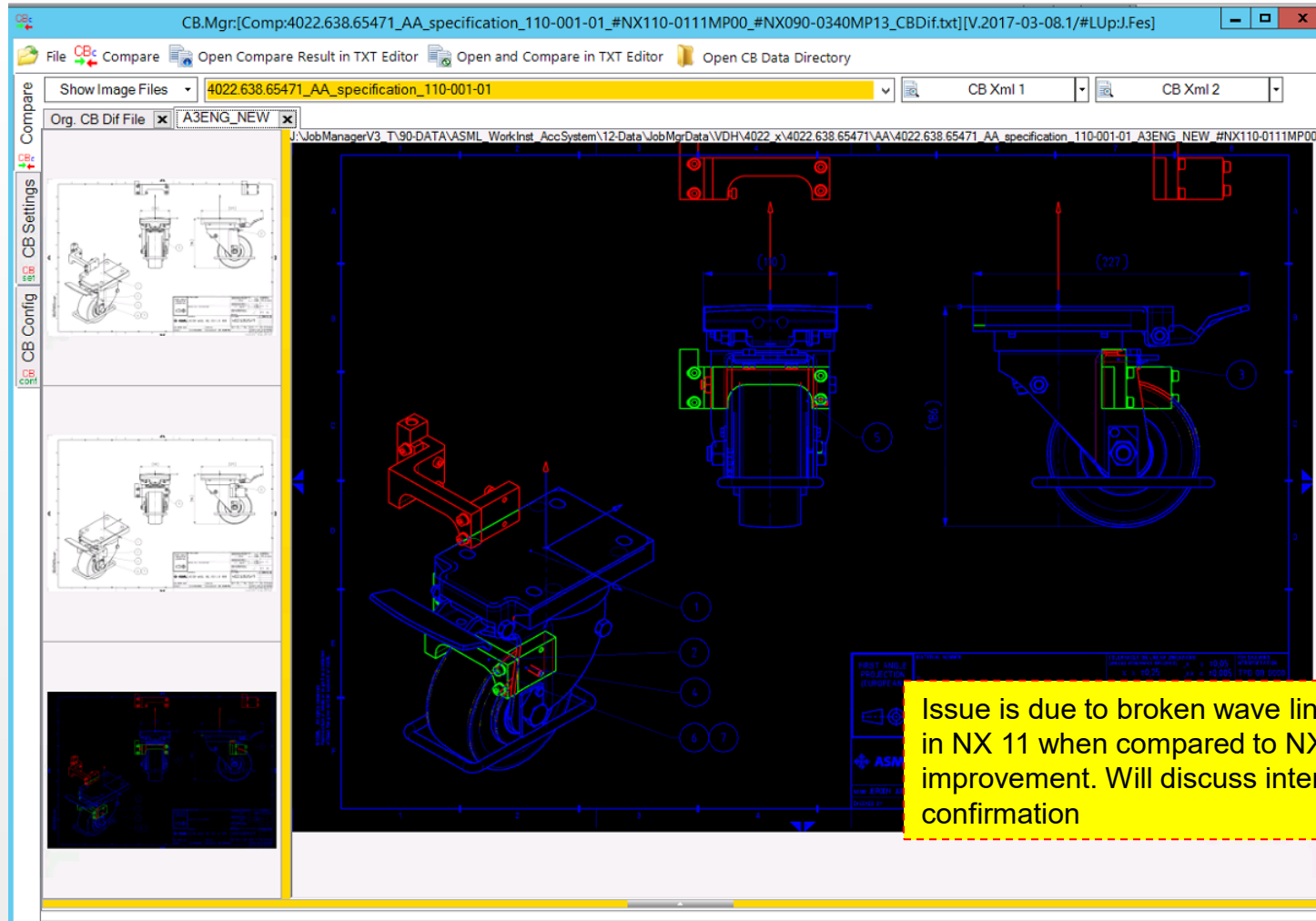
- Model compare
- Drawing compare

Check '-Assembly Parts-' (AP)

- Model compare
- Drawing compare
- Assembly compare

08.03.2017 – Issue Drawing Compare

Example: ****.xxxx_AA_specification_110-001-01



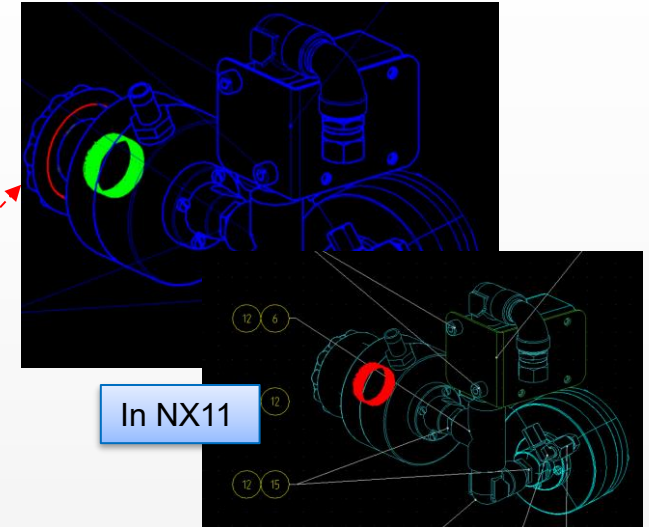
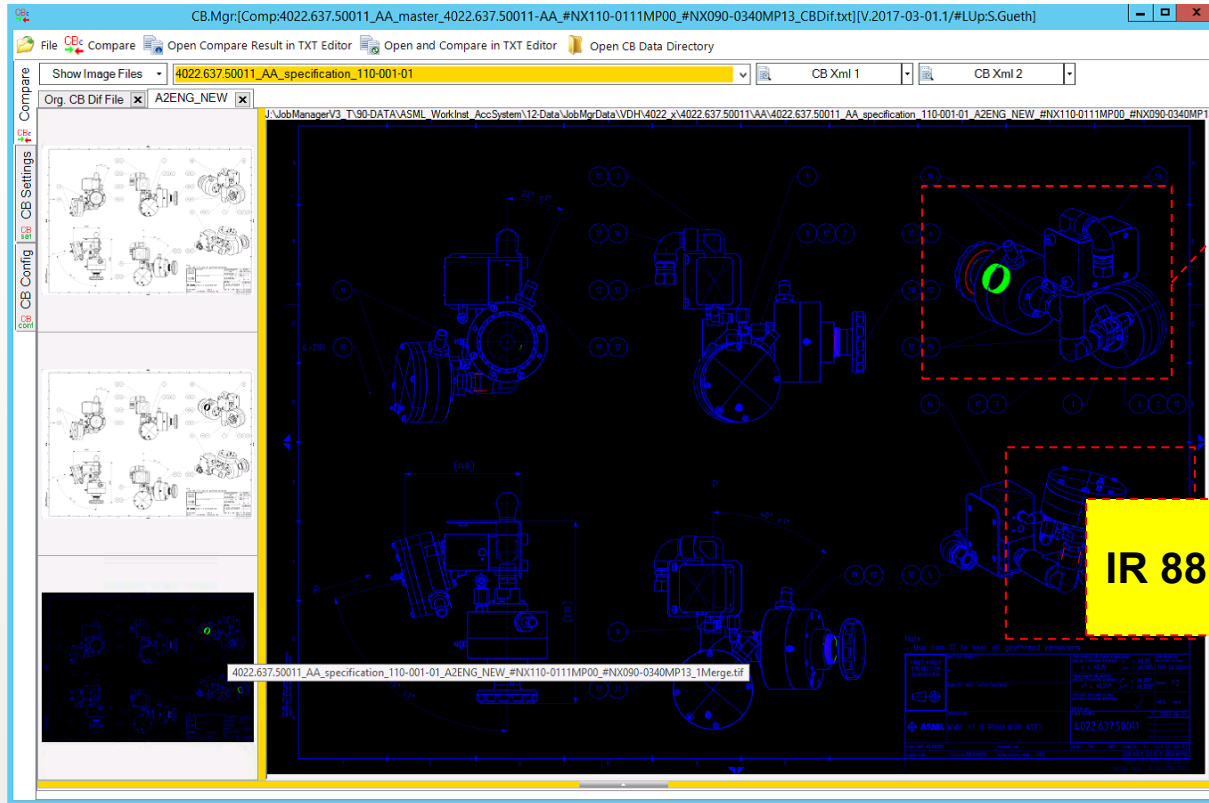
14.03.2017:
ReDo with new Load Rule:
ASML Latest Working

14.03.2017 MP1
Issue **remains** also with
Rule: ASML Latest
Working

Issue is due to broken wave link in the assembly. Behavior changed in NX 11 when compared to NX 9, I believe this to be an improvement. Will discuss internally and raise IR to get confirmation

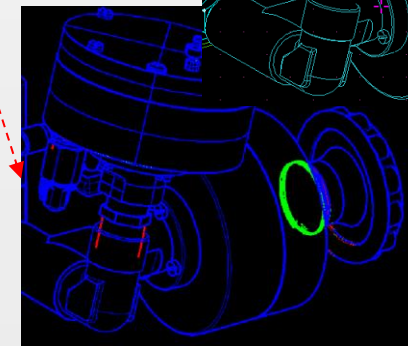
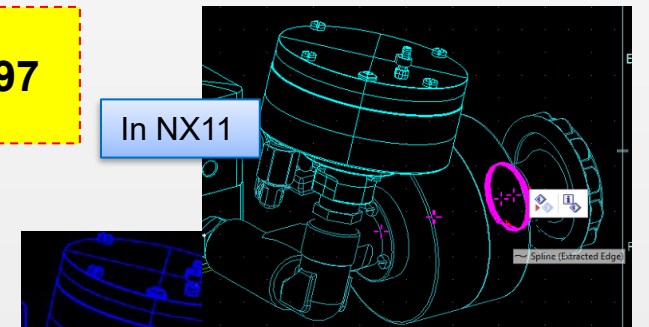
04.03.2017 – Issue Diff in Drawing

Example: ****.xxxx_AA_specification_110-001-01



IR 8819697

In NX11



```
##### Section:AS:[Assembly Data] Result:[AS:ERR:Callout,WRN:Inst.Handel]

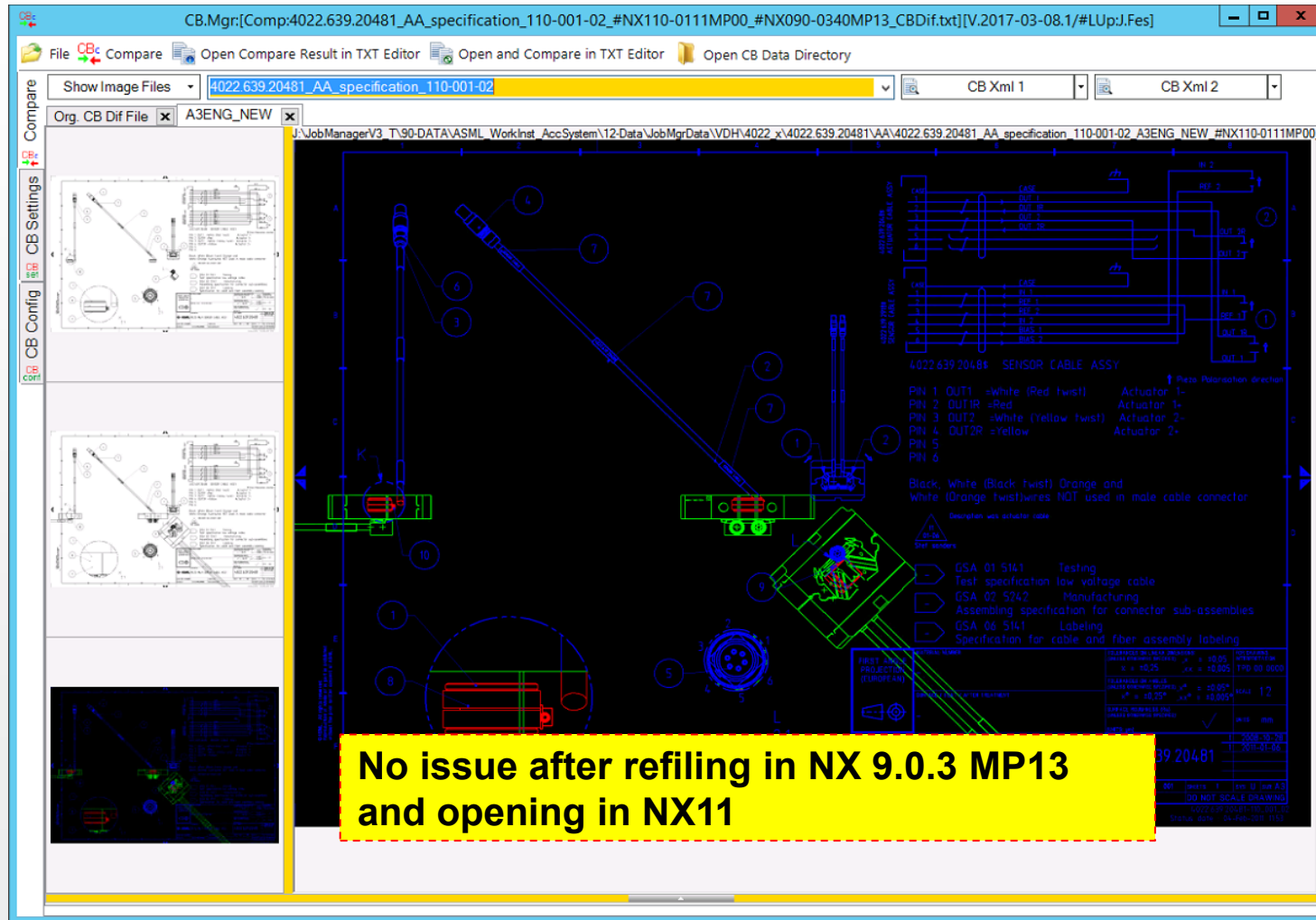
Warning:AS..... InstanceHandleForCompar: Val.Dif:[Is not equal]
|-> Object..... AS.Comp:/Lev:1/Callout:20/PN=4022.637.50181 PRN=
|-> NX9..... RM%UL=V1.0 PH=AqilcimTQS4FxA 00001b76b00000036
|-> NX11..... RM%UL=V1.0 PH=AqilcimTQS4FxA 00001b76b00000042

++Error:AS..... Callout: Val.Dif:[Is not equal]
|-> Object..... AS.Comp:/Lev:1/Callout:20/PN=4022.637.50181 PRN=
|-> NX9..... 20
|-> NX11..... 13
```

Issue in NX 11, detailed thread of a dumb solid. Representation issue in drafting. No issue in NX 9

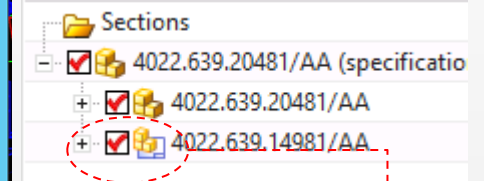
08.03.2017 – Issue Drawing Compar

Example: ****.xxxx_AA_specification_110-001-02



16.03.2017:
Test with NX110-0111MP01
leads to same Issue

NX9



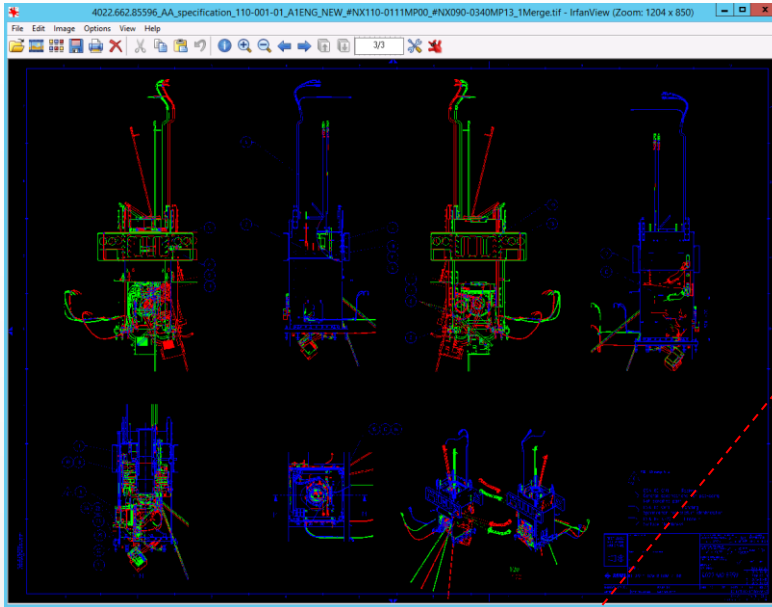
NX110-0111MP01

Assembly Navigator	
Object	Number
Sections	
4022.639.20481/AA-P...	110-001-0
4022.639.20481/AA-...	4022.639.20
4022.639.14981/AA-...	4022.639.14

No issue after refiling in NX 9.0.3 MP13
and opening in NX11

14.03.2017 – Issue Drawing Compare

Example: ****.xxxx_AA_specification_110-001-01



Issue:

View Anchor Points moving because components are moving.

Problem is maybe caused by NX9 because in NX.syslog you see issue:

Adding load status for ****.438.73419/vc - Part file is from a newer version of NX than this one (641003)

Analyse:

Assembly can be fully loaded in NX11 but not in NX9

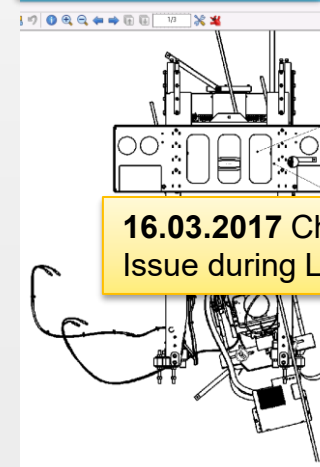
Perhaps it is an improvement of NX11

NX9 load AP **.xxxx/AA**
|-> ****.yyy.xxxx/vc

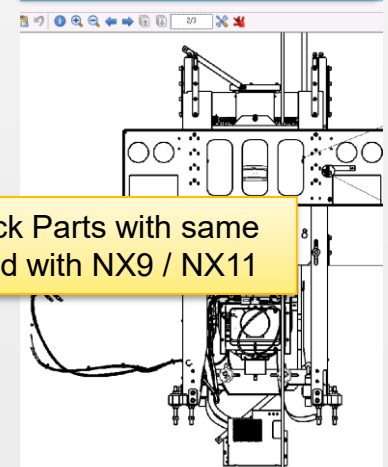
```
2172 *** EXCEPTION: Error code 641003 in line 1863 of D:\workdir\Reference\NX903_4\src\part\no\ind\part_file_header.c
2173 +++ Illegal part version number 53
2174 [ 1] 7FFCF3EF8A5C (KERNELBASE)
2175 ..
2176 [40] 7FF7C035D043 (NxCheckBox_64_9_V.2.0.1.18)
2177 [41] 7FFCF44213D2 (KERNEL32)
2178 [42] 7FFCF6AD54E4 (ntdll)
2179 >>> Error code 641003 caught in file "D:\workdir\Patches\NX903_patch\src\part\no\ind\part_load.c" at line number
2180 Adding load status for 4022.438.73419/vc - Part file is from a newer version of NX than this one (641003)
2181 >>> Error code 641003 successfully handled and acknowledged
```

```
2217: Adding load status for 4022.438.73419/vc - Part file is from a newer version of NX than this one (641003)
2289: Adding load status for 4022.438.73419/vc - Part file is from a newer version of NX than this one (641003)
2347: Adding load status for 4022.438.73419/vc - Part file is from a newer version of NX than this one (641003)
```

NX090-0340MP13



NX110-0111MP01



16.03.2017 Check Parts with same Issue during Load with NX9 / NX11

Section of CheckBox Analyse

Check '-Single Parts-' '-Assembly Parts-'

- Part header compare
- Parts cannot be open in NX11

Check '-Single Parts-' (SP)

- Model compare
- Drawing compare

Check '-Assembly Parts-' (AP)

- Model compare
- Drawing compare
- Assembly compare

24.03.2017 – Issue Assembly Compare

Example: ****.xxxx_AB_specification_110-001-01

```

CBMgr:[Comp:4022.654.85251_AB_specification_110-001-01_#NX110-0111MP00_#NX090-0340MP13_CBDiff.txt][V.2017-03-08.1/#LUpJ.Fes]

File CB Compare Open Compare Result in TXT Editor Open and Compare in TXT Editor Open CB Data Directory

Show Image Files 4022.654.85251_AB_specification_110-001-01 CB Xml 1 CB Xml 2

Org CB Diff File A3GEN_NEW X

--Error:MD.....: Refset.CenterOfGravity #Info:Entry listed as warning because:'ModelBodysCheck' is already estimated by:PrototypeAnalysis
--> Object.....: Refset:MODEL
--> NX9.....: X:[-1.063010] Y:[-66.200000] Z:[49.150000]
--> NX11.....: X:[51.918492] Y:[-66.200000] Z:[51.650000]
--> Difference.....: ERROR because Diff.high:[53.040452]>0.001
--> 3D Dist.....: X.Dif:[-52.981502] Z.Dif:[-2.500000]
--> 3D Dist.....: 3D Dist:[53.040452] of P1:[X:[-1.063010] Y:[-66.200000] Z:[49.150000]] <-> P2:[X:[51.918492] Y:[-66.200000] Z:[51.650000]]

--Error:MD.....: Refset.MomentOfInertia #Info:Entry listed as warning because:'ModelBodysCheck' is already estimated by:PrototypeAnalysis
--> Object.....: Refset:MODEL
--> NX9.....: X:[1519655382423.440400] Y:[781704618846.915040] Z:[1221340931739.778800]
--> NX11.....: X:[167999756820.714870] Y:[128094307621.731340] Z:[168954478736.350400]
--> Difference.....: ERROR because Diff.high:[1833493009429.960000]>0.1
--> 3D Dist.....: 3D Dist:[1833493009429.960000] of P1:[X:[1519655382423.440400] Y:[781704618846.915040] Z:[1221340931739.778800]] <-> P2:[X:[167999756820.714870] Y:[128094307621.731340] Z:[168954478736.350400]]

##### Section:AS:[Assembly Data] Result:[AS:ERR:Transl.Matrix,WRN:Inst.Handel] #####

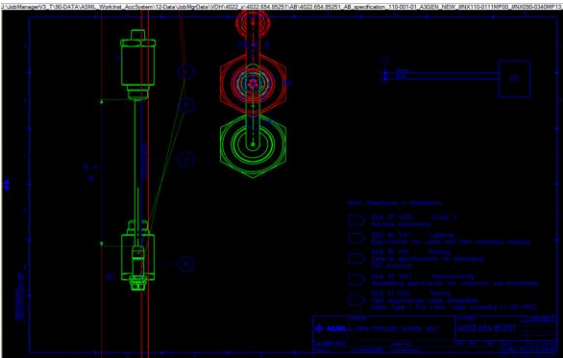
Warning:AS.....: InstanceHandleForCompare: Val.Dif:[Is not equal]
--> Object.....: AS.Comp/Lev1/Callout/FN=4022.476.25531 PRN=vc RT="has shape" PRN=gqjdyHcbQs4FxA/C.Handle:0000004c000000. [C.Handle(full)
--> NX9.....: RMVUL=V1.0 PH=1201SPaTQs4FxA AUD=GlulSPaTQs4FxA 0000004c00000014b
--> NX11.....: RMVUL=V1.0 PH=1201SPaTQs4FxA AUD=GlulSPaTQs4FxA 0000004c00000014b

--Error:AS.....: Translation.Matrix: Val.Dif:[More then:0.000010]
--> Object.....: AS.Comp/Lev1/Callout/FN=4022.476.25531 PRN=vc RT="has shape" PRN=gqjdyHcbQs4FxA/C.Handle:0000004c000000. [C.Handle(full)
--> NX9.....: X1:[0.000000] Y1:[0.000000] Z1:[0.000000] X2:[-1.000000] Y2:[0.000000] Z2:[0.000000] X3:[0.000000] Y3:[0.000000] Z3:[0.000000]
--> NX11.....: X1:[0.000000] Y1:[0.381849] Z1:[-0.924225] X2:[1.000000] Y2:[0.000000] Z2:[0.000000] X3:[0.000000] Y3:[-0.924225] Z3:[-1.000000]
--> Difference.....: Y1.Dif:[0.381849] Z1.Dif:[-0.924225] X2.Dif:[1.000000] Y2.Dif:[0.000000] Z2.Dif:[0.000000] X3.Dif:[0.000000] Y3.Dif:[-0.924225] Z3.Dif:[-1.000000]

--Error:AS.....: Translation.Matrix: Val.Dif:[More then:0.000010]
--> Object.....: AS.Comp/Lev1/Callout/FN=lemo_081.56 PRN=vc RT="has shape" PRN=Quidj01QqS4FxA/C.Handle:00000050d00000. [C.Handle(full)
--> NX9.....: X1:[0.000000] Y1:[0.381849] Z1:[-0.924225] X2:[0.000000] Y2:[-0.924225] Z2:[-0.381849] X3:[1.000000] Y3:[0.000000] Z3:[0.000000]
--> NX11.....: X1:[0.000000] Y1:[1.000000] Z1:[0.000000] X2:[0.000000] Y2:[1.000000] Z2:[1.000000] X3:[1.000000] Y3:[0.000000] Z3:[0.000000]
--> Difference.....: Y1.Dif:[0.618151] Z1.Dif:[-0.924225] Y2.Dif:[-0.924225] Z2.Dif:[-0.381849] X3.Dif:[-2.000000] originX.Dif:[1223.610046]

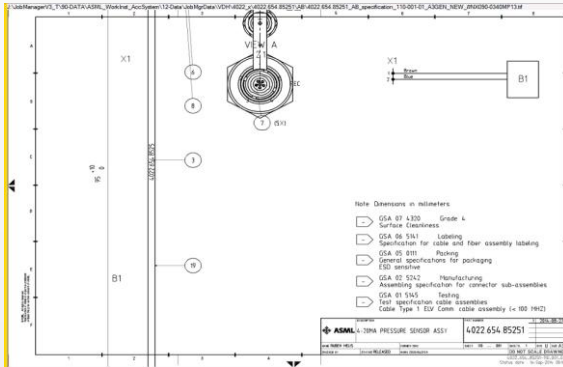
```

2*



NX090-0340MP13

3*

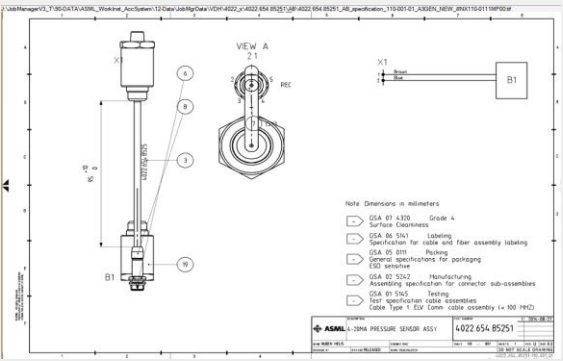


Issue:
Parts are moved in Assembly (1*) also Drawing differs (2*)

Analyse:
In NX9 (3*) the Drawing looks wrong in NX11 Drawing looks OK (4*)

NX110-0111MP01

4*



24.03.2017 – Issue Assembly Compare

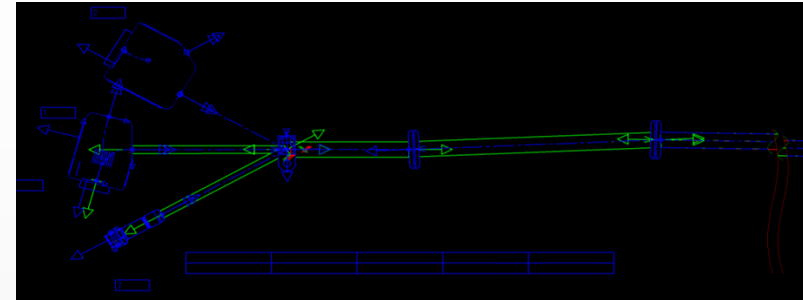
Example: ****.xxx_specification-dwg3

```

CB Mgr[Compdemo-4022.BUN.0001_1_specification_demo-4022.BUN.0001-1-dwg3_#NX110-0111MP00_#NX090-0340MP13_CBDif.txt][V.2017-03-08/1/Up/Lfres]
File [C] Compare [O] Open Compare Result in TXT Editor [O] Open and Compare in TXT Editor [O] Open CB Data Directory
Show Image Files [O] demo-4022.BUN.0001_1_specification_demo-4022.BUN.0001-1-dwg3 [O] CB Xml 1 [O] CB Xml 2
Org CB Dif File [X] SHT [X]
***** Section:AS: [Assembly Data] Result: [AS:ERR:Transl.Matrix,WRN:Inst.Handel] *****
Warning:AS..... InstanceHandleForCompare: Val.Dif:[Is not equal]
[-> Object..... AS.Comp/Levi/Callout/FR=4022.438.39511-ACAL FRM=1 RT="has shape" FRM=jgplnaQ2S4FxA/C.Handle:0000030400000.[C.Handle(full):RNMUL=V1.0 PH=CVq
[-> NK9..... RNMUL=V1.0 PH=CVq13V66Q2S4FxA AUDID=it1lodj3Q2S4FxA 000003010000014e
[-> NK11..... RNMUL=V1.0 PH=CVq13V66Q2S4FxA AUDID=it1lodj3Q2S4FxA 000003010000014e
--Error:AS..... Translation.Matrix: Val.Dif:[More then:0.000010]
[-> Object..... AS.Comp/Levi/Callout/FR=4022.438.39511-ACAL FRM=1 RT="has shape" FRM=jgplnaQ2S4FxA/C.Handle:0000030400000.[C.Handle(full):RNMUL=V1.0 PH=CVq
[-> NK9..... X1:[-0.999890] Y1:[-0.014932] Z1:[0.000000] X2:[-0.014932] Y2:[-0.999890] Z2:[0.000000] X3:[0.000000] Y3:[0.000000] Z3:[-1.000000] originX:[90.50
[-> NK11..... X1:[-0.999889] Y1:[-0.014932] Z1:[0.000000] X2:[-0.014932] Y2:[-0.999889] Z2:[0.000000] X3:[0.000000] Y3:[0.000000] Z3:[-1.000000] originX:[90.50
[-> Difference..... Y1.Dif:[0.000009] X2.Dif:[-0.000009] originX.Dif:[-0.001202] originY.Dif:[-0.000018]
Warning:AS..... InstanceHandleForCompare: Val.Dif:[Is not equal]
[-> Object..... AS.Comp/Levi/Callout/FR=4022.438.39547-ACAL FRM=1 RT="has shape" FRM=kpt116J1Q2S4FxA/C.Handle:0000030400000.[C.Handle(full):RNMUL=V1.0 PH=CVq
[-> NK9..... RNMUL=V1.0 PH=CVq13V66Q2S4FxA AUDID=it1lodj3Q2S4FxA 000003040000014e
[-> NK11..... RNMUL=V1.0 PH=CVq13V66Q2S4FxA AUDID=it1lodj3Q2S4FxA 000003040000014e
--Error:AS..... Translation.Matrix: Val.Dif:[More then:0.000010]
[-> Object..... AS.Comp/Levi/Callout/FR=4022.438.39547-ACAL FRM=1 RT="has shape" FRM=kpt116J1Q2S4FxA/C.Handle:0000030400000.[C.Handle(full):RNMUL=V1.0 PH=CVq
[-> NK9..... X1:[0.000000] Y1:[0.000002] Z1:[1.000000] X2:[-0.042785] Y2:[0.999084] Z2:[-0.000002] X3:[-0.999084] Y3:[-0.042785] Z3:[0.000000] originX:[167.75
[-> NK11..... X1:[0.000000] Y1:[0.000000] Z1:[1.000000] X2:[-0.042876] Y2:[0.999080] Z2:[-0.000000] X3:[-0.999080] Y3:[-0.042876] Z3:[0.000000] originX:[167.75
[-> Difference..... X2.Dif:[0.000081] Y3.Dif:[0.000081] originX.Dif:[-0.000881] originY.Dif:[-0.000881]
Warning:AS..... InstanceHandleForCompare: Val.Dif:[Is not equal]
[-> Object..... AS.Comp/Levi/Callout/FR=4022.438.39547-ACAL FRM=1 RT="has shape" FRM=kpt116J1Q2S4FxA/C.Handle:0000030400000.[C.Handle(full):RNMUL=V1.0 PH=CVq
[-> NK9..... RNMUL=V1.0 PH=CVq13V66Q2S4FxA AUDID=it1lodj3Q2S4FxA 000003040000014e
[-> NK11..... RNMUL=V1.0 PH=CVq13V66Q2S4FxA AUDID=it1lodj3Q2S4FxA 000003040000014e
--Error:AS..... Translation.Matrix: Val.Dif:[More then:0.000010]
[-> Object..... AS.Comp/Levi/Callout/FR=4022.438.39547-ACAL FRM=1 RT="has shape" FRM=kpt116J1Q2S4FxA/C.Handle:0000030400000.[C.Handle(full):RNMUL=V1.0 PH=CVq
[-> NK9..... X1:[0.000000] Y1:[0.000000] Z1:[-0.017865] Y2:[-0.999839] Z2:[0.000000] X3:[-0.999839] Y3:[-0.017865] Z3:[0.000000] originX:[302.76
[-> NK11..... X1:[0.000000] Y1:[0.000000] Z1:[-0.018013] Y2:[-0.999838] Z2:[0.000000] X3:[-0.999838] Y3:[-0.018013] Z3:[0.000000] originX:[302.76
[-> Difference..... X2.Dif:[0.000053] Y3.Dif:[0.000053] originX.Dif:[-0.000340] originY.Dif:[-0.018890]
Warning:AS..... InstanceHandleForCompare: Val.Dif:[Is not equal]
[-> Object..... AS.Comp/Levi/Callout/FR=4022.438.39269-ACAL FRM=1 RT="has shape" FRM=Ct11XcK1Q2S4FxA/C.Handle:00000206700000.[C.Handle(full):RNMUL=V1.0 PH=CVq
[-> NK9..... RNMUL=V1.0 PH=CVq13V66Q2S4FxA AUDID=it1lodj3Q2S4FxA 000002064000014e
[-> NK11..... RNMUL=V1.0 PH=CVq13V66Q2S4FxA AUDID=it1lodj3Q2S4FxA 000002064000014e
--Error:AS..... Translation.Matrix: Val.Dif:[More then:0.000010]
[-> Object..... AS.Comp/Levi/Callout/FR=4022.438.39269-ACAL FRM=1 RT="has shape" FRM=Ct11XcK1Q2S4FxA/C.Handle:00000206700000.[C.Handle(full):RNMUL=V1.0 PH=CVq
[-> NK9..... X1:[0.353896] Y1:[0.612175] Z1:[-0.707107] X2:[-0.353896] Y2:[0.612175] Z2:[0.707107] X3:[0.865746] Y3:[0.800464] Z3:[0.000000] originX:[-13.80
[-> NK11..... X1:[0.353896] Y1:[0.612149] Z1:[-0.707107] X2:[-0.353896] Y2:[0.612149] Z2:[0.707107] X3:[0.865709] Y3:[0.800548] Z3:[0.000000] originX:[-13.79
[-> Difference..... X1.Dif:[0.000045] Y1.Dif:[0.000026] X2.Dif:[0.000045] Y2.Dif:[0.000026] X3.Dif:[0.000037] Y3.Dif:[-0.000064] originX.Dif:[-0.004481] originY.Dif:
***** Section:DR: [Drawing Data] Result: [DR:WRN:ViewDepO_n] *****
Warning:DR..... ViewDependentObjects_n: Val.Dif:[Is not equal]
[-> Object..... SHT

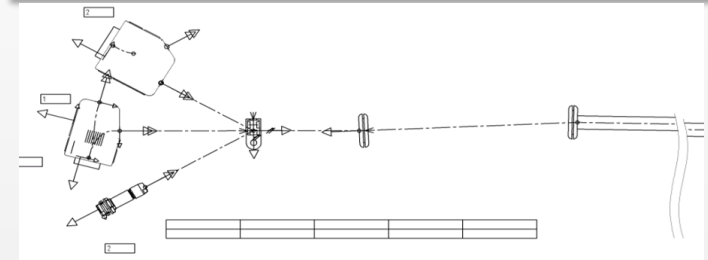
```

2*



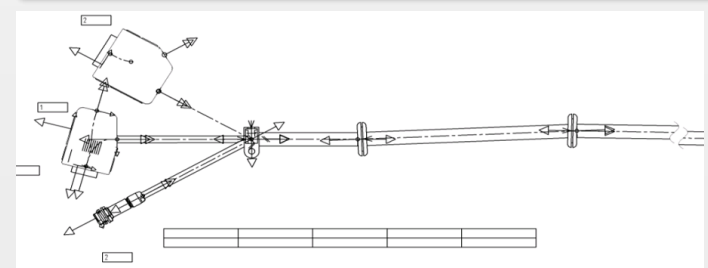
3*

NX090-0340MP13



4*

NX110-0111MP01



Issue:
Parts are moved in Assembly (1*) also Drawing differs (2*)

Analyse:
In NX9 (3*) the Drawing looks wrong in NX11 Drawing looks OK (4*)