

# PLMJobManager

## --- Short Presentation ---

Created by : Josef Feuerstein

## Description *PLMJobManager*

Software PLMJobManager is a third party application which is to be used to:

- **Analyze** TC / NX Data
- **Process** TC / NX Data

**Analyzes** is Done via Reading Data from TC or NX and Analyzing them along defined rules.

**Processes** on TC or CAD Data is Done via **Standard Tools** delivered by Software Vendor (Siemens) or Custom tools that are programmed with **Standard API** via 'ITK' or 'NX open'.

JobManager:

- them selves do **NOT** change any Data in TC or on CAD Parts.
- is a **generic Engine** for 'Mass data processing' in TC environment.

## Base intent of *PLMJobManager*

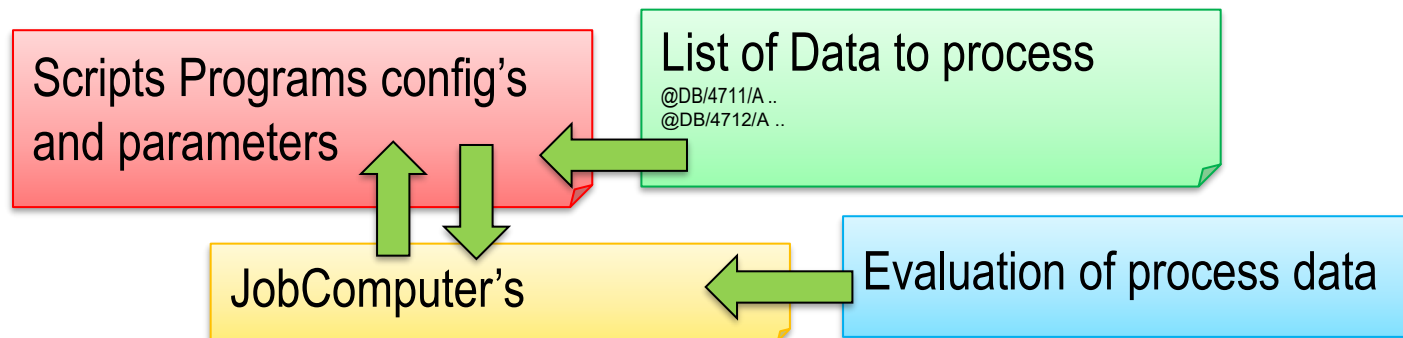
In TC and NX Environment there are many tools to process data in Batch mode like:

- Extracting NX Data information's                      via → CheckBox for NX
- CMM migration ..    via → cmm tools
- JT-File generation    via → UgToPV.exe
- DXF-File Export    via → ugto2d.exe und dxfdwg.exe
- IGES and Step Export    via → Step214Ug.cmd / iges.cmd
- PLM Data Migrations    via → TC Tools / NX Tools / PLM Vendor Tools
- PLM-Easy    via → PLM-Easy Tools

To run those kind of program's we do need:

- Scripts configurations files and parameters to control a process under defined conditions
- Input list organized in right order of objects to process
- To process them on many computer at the same time.
- also, it is needed to have a result evaluation of the process .

Schema:



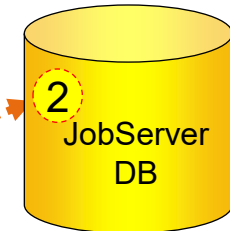
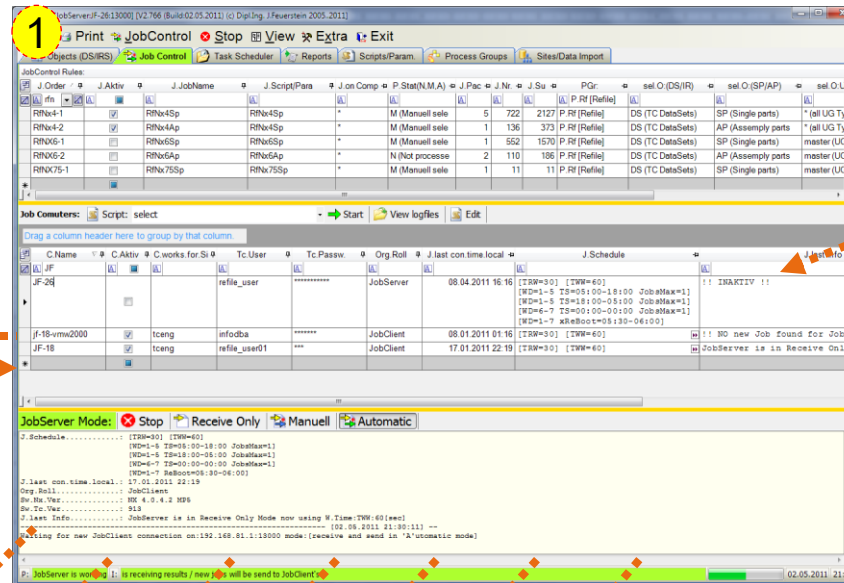
The Concept of *PLMJobManager* is: To automate this kind of processes in a performant understandable way.

# Working with the JobServer: Job Control

The JobServer (1) will be located at one of your locations. It organizes the JobServer-DB (2) organizes all JobClients (3) and storage of the PartUpdate results. (4)

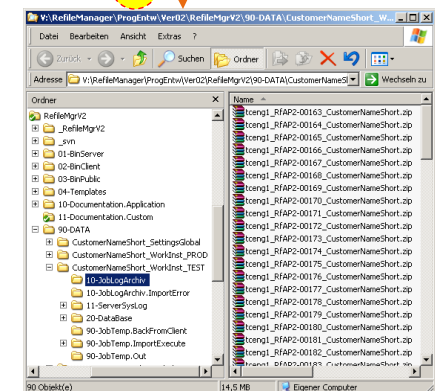
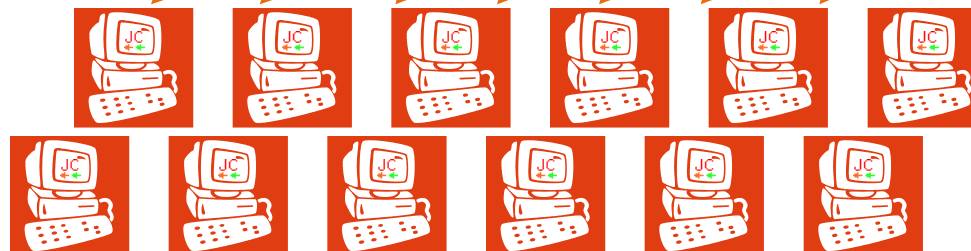


Procedure of the processing:  
The JobClients (5) are connecting to the JobServer (1) and receiving a PartUpdate Job (packet) (6). The JobClient hands over the Results to the JobServer (7).

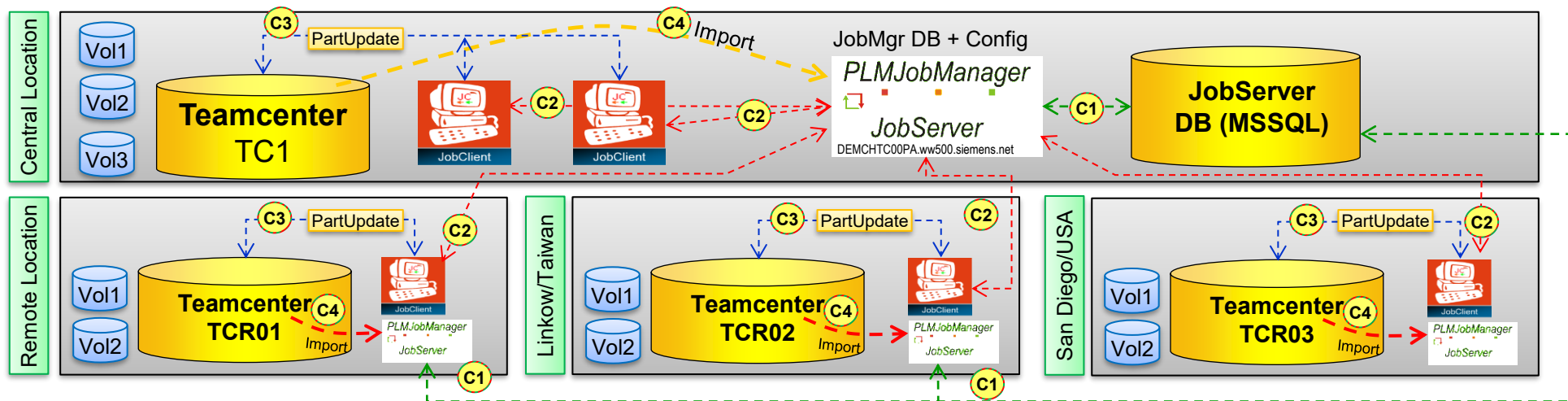


The JobServer organizing the received JobLogfiles

Coordination of the JobClient's



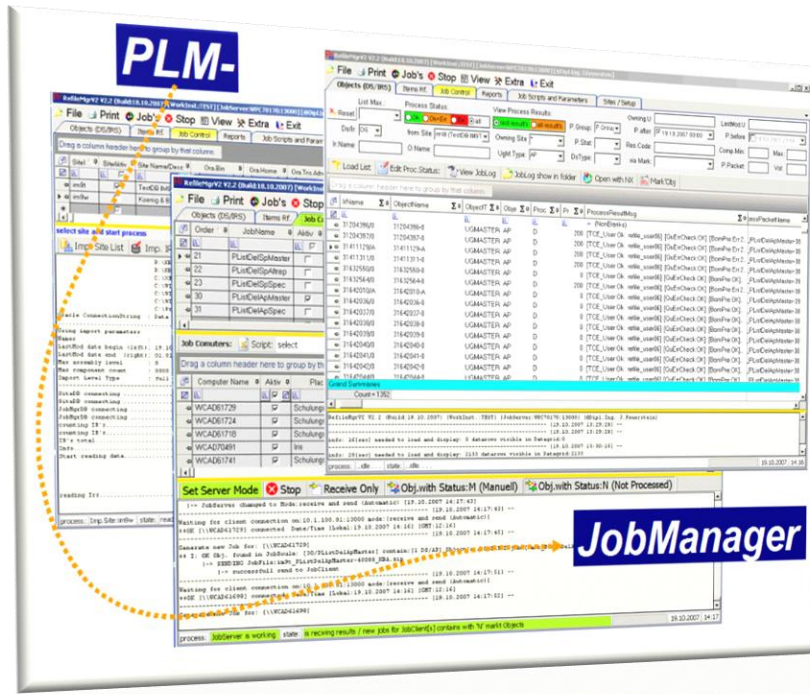
# System Sketch TC + JobManager example PartUpdate with TC Multisite



Nr	Description	Connect via:
C1	communication JobServer MS-SQL	TCP:1433 UDP: 1434
C2	communication JobClient – JobServer	Port:13000 / 13001
C3	part_utility.exe	Handel by IT
C4	Import Meta Data from TC Db	Uses TnsNames.ora like (C3)

## System prerequisite

1. Teamcenter inc. all Volumes Data
2. Oracle Read Only User reading data from TC. Database.
3. Script to get TC/NX Prompt.
4. JobClients with TC 2tier/4tier client and NX in the correct version
5. Remote Access to JobClient's



Thank you for interest

For more Details please contact:

addPLM - GmbH

Mr. Josef Feuerstein

[Josef.Feuerstein@addPLM.com](mailto:Josef.Feuerstein@addPLM.com)

[www.addPLM.com](http://www.addPLM.com)