

PLMJobManagerV3

RefileNx10 – Setting

Erstellt von:
Josef Feuerstein

Refile Process Basic Workflow

- Schema below shows how "Job.Rules" and "Object Status" is controlling the refile process

Job.Rules

Rf011	<input checked="" type="checkbox"/>	Rf_01SP_R1	Refile Singeplarts [select:RUN1]	RUN1:N (select N + R...
Rf012	<input checked="" type="checkbox"/>	Rf_01SP_R2	Refile Singeplarts [select:RUN2 5inP]	RUN2:D.RUN1.ERR (...)

Objects before refile

Ir.Id / Σ #	O.Ty / Σ #	O.Na / Σ #	O.P.Rf [Refile]	Σ #
V045730M	UGMASTER	V045730-1	N (not.Proc.)	RUN1 (1'nt RUN)
	UGPART	110-001-01	N (not.Proc.)	RUN1 (1'nt RUN)

```
-- #Rule of Rf011:
[RuleID=Default] [P.Stat=D]
[RuleID=OK] [O.Type=] [J.ResCode=0] [J.ResMsg=] [J.ResWarn=0] [P.Stat=D.OK]
[RuleID=WRN] [O.Type=] [J.ResCode=0] [J.ResMsg=] [J.ResWarn=1] [P.Stat=D.WRN]
[RuleID=ERR] [O.Type=] [J.ResCode<>0] [J.ResMsg=] [J.ResWarn=] [P.Stat=D.RUN1.ERR]
```

RUN Refile Rf011

OK?

Yes

D.OK or D.WRN

NO

D.RUN1.ERR

Objects after 2. Refile

Ir.Id / Σ #	O.Ty / Σ #	O.Na / Σ #	O.P.Rf [Refile]	Σ #
V045730M	UGMASTER	V045730-1	D.RUN1.ERR (after ...)	RUN2 (2'nt RUN Job ...)
	UGPART	110-001-01	D.RUN1.ERR (after ...)	RUN2 (2'nt RUN Job ...)

```
-- #Rule of Rf012:
[RuleID=Default] [P.Stat=D]
[RuleID=OK] [O.Type=] [J.ResCode=0] [J.ResMsg=] [J.ResWarn=0] [P.Stat=D.OK]
[RuleID=WRN] [O.Type=] [J.ResCode=0] [J.ResMsg=] [J.ResWarn=1] [P.Stat=D.WRN]
[RuleID=ERR] [O.Type=] [J.ResCode<>0] [J.ResMsg=] [J.ResWarn=] [P.Stat=D.RUN2.ERR]
```

RUN Refile Rf012

OK?

Yes

D.OK or D.WRN

NO

D.RUN2.ERR

.. Using same Schema like in Refile 1 .. 2

Refile Process Workflow Settings

Job.Rules in Detail

Edit JobControl Rule

J. Order	Aktiv	J. JobName	J. Description
R011	<input checked="" type="checkbox"/>	Rf_01SP_R1	Refile Singeplants [select.RUN1]

Job Definition

P.Group: P.Rf [Refile] J.Nr. Last: 247 O. send: 13889

J.Script/Para: Rf_01SP J.Packet size: 20 J.MaxSum.CompN: 0

sel.O. (SP/AP): SP (Single parts)

sel.O. (DS/IR/I): DS (DataSets) sel.O. MaxComp: 6000 sel.O. MinComp: 0

sel.O. Multi. S: SiteObj. Only sel.O. MinApLevles: sel.O. MaxApLevles:

sel.O. Type(s): UGMASTER sel.O. P.Stat(N,M): RUN1 (1'nt RUN)

sel.O. Special: DS of IR (TC DataSets) -> Incl.O. Type(s): * -> Incl.P. Stat: *

Job Definition Select Objects Extendet Defs. Extendet Process State Control Job Schedule

Job Result Proc. State Value Rule Edit Process State Defs ...

```

-- #Rules: Standard
[RuleID=Default] [P.Stat=D]
[RuleID=OK] [O.Type=] [J.ResCode=0] [J.ResMsg=] [J.ResWarn=0] [P.Stat=D.OK]
[RuleID=WRN] [O.Type=] [J.ResCode=0] [J.ResMsg=] [J.ResWarn=1] [P.Stat=D.WRN]
[RuleID=ERR] [O.Type=] [J.ResCode>0] [J.ResMsg=] [J.ResWarn=] [P.Stat=D.RUN1.ERR]
  
```

ProcState Collection Editor

Members:

- 0 RUN1
- 1 RUN2
- 2 RUN3
- 3
- 4 D.RUN1.ERR
- 5 D.RUN2.ERR
- 6 D.RUN3.ERR
- 7
- 8 RUN1.N
- 9 RUN2.D.RUN1.ERR
- 10 RUN3.D.RUN2.ERR
- 11
- 12 T
- 13 T.D.T.*

RUN1 properties:

Basic

Name: RUN1

Description: 1'nt RUN

Colors

CustomBackground: Yellow

BackgroundColor: Yellow

CustomForeground: Black

ForegroundColor: Black

Misc

DisplayText: RUN1 (1'nt RUN)

ProcState Collection Editor

Members:

- 0 RUN1
- 1 RUN2
- 2 RUN3
- 3
- 4 D.RUN1.ERR
- 5 D.RUN2.ERR
- 6 D.RUN3.ERR
- 7
- 8 RUN1.N
- 9 RUN2.D.RUN1.ERR
- 10 RUN3.D.RUN2.ERR
- 11
- 12 T
- 13 T.D.T.*

RUN2 properties:

Basic

Name: RUN2

Description: 2'nt RUN Job Size 1

Colors

CustomBackground: Yellow

BackgroundColor: Yellow

CustomForeground: Black

ForegroundColor: Black

Misc

DisplayText: RUN2 (2'nt RUN Job Size 1)

ProcState Collection Editor

Members:

- 0 RUN1
- 1 RUN2
- 2 RUN3
- 3
- 4 D.RUN1.ERR
- 5 D.RUN2.ERR
- 6 D.RUN3.ERR
- 7
- 8 RUN1.N
- 9 RUN2.D.RUN1.ERR
- 10 RUN3.D.RUN2.ERR
- 11
- 12 T
- 13 T.D.T.*

RUN3 properties:

Basic

Name: RUN3

Description: 3'nt RUN Job Size 1

Colors

CustomBackground: Yellow

BackgroundColor: Yellow

CustomForeground: Black

ForegroundColor: Black

Misc

DisplayText: RUN3 (3'nt RUN Job Size 1)

Entire Rules for SP and AP Refile

R011	<input checked="" type="checkbox"/>	Rf_01SP_R1	Refile Singeplants [select.RUN1]	Rf_01SP	P.Rf [Refile]	New: [17.08.14]	*	RUN1 (1'nt RU..	20
R012	<input checked="" type="checkbox"/>	Rf_01SP_R2	Refile Singeplants [select.RUN2 Si	Rf_01SP	P.Rf [Refile]	New: [31.08.14]	*	RUN2 (2'nt RU..	5
R013	<input checked="" type="checkbox"/>	Rf_01SP_R3	Refile Singeplants [select.RUN1 1	Rf_01SP	P.Rf [Refile]	New: [31.08.14]	*	RUN3 (3'nt RU..	1
R021	<input checked="" type="checkbox"/>	Rf_02AP_R1	Refile Assemblyparts [select.RUN	Rf_02AP	P.Rf [Refile]	New: [17.08.14]	*	RUN1 (1'nt RU..	20
R022	<input checked="" type="checkbox"/>	Rf_02AP_R2	Refile Assemblyparts [select.RUN	Rf_02AP	P.Rf [Refile]	New: [31.08.14]	*	RUN2 (2'nt RU..	5
R023	<input checked="" type="checkbox"/>	Rf_02AP_R3	Refile Assemblyparts [select.RUN	Rf_02AP	P.Rf [Refile]	New: [31.08.14]	*	RUN3 (3'nt RU..	1

Edit Object Status

Edit process status

Edit: P.Rf [Refile]

N (not Proc.) X (excluded) D (Done) M (Manual)

RUN1 (1'nt RUN)

RUN2 (2'nt RUN Job Size 1)

RUN3 (3'nt RUN Job Size 1)

1

D.RUN1.ERR (after RUN 1)

D.RUN2.ERR (after RUN 2)

D.RUN3.ERR (after RUN 3 Job Size 1)

2

RUN1.N (selected N + RUN1)

RUN2.D.RUN1.ERR (selected RUN2 + RUN1.ERR)

RUN3.D.RUN2.ERR (selected RUN3 + RUN2.ERR)

3

T (Test)

T.D.T.* (Select only Test)

from: D.OK from any previous status

to: D.OK (Done)

active row 1 selected rows 20 visible rows

Cancel

Ir.Id	Σ #	O.Ty	Σ #	O.Na	Σ #	O.P.Rf [Refile]	Σ #
V045730M		UGMASTER		V045730-1		N (not.Proc.)	
		UGPART		110-001-01		N (not.Proc.)	

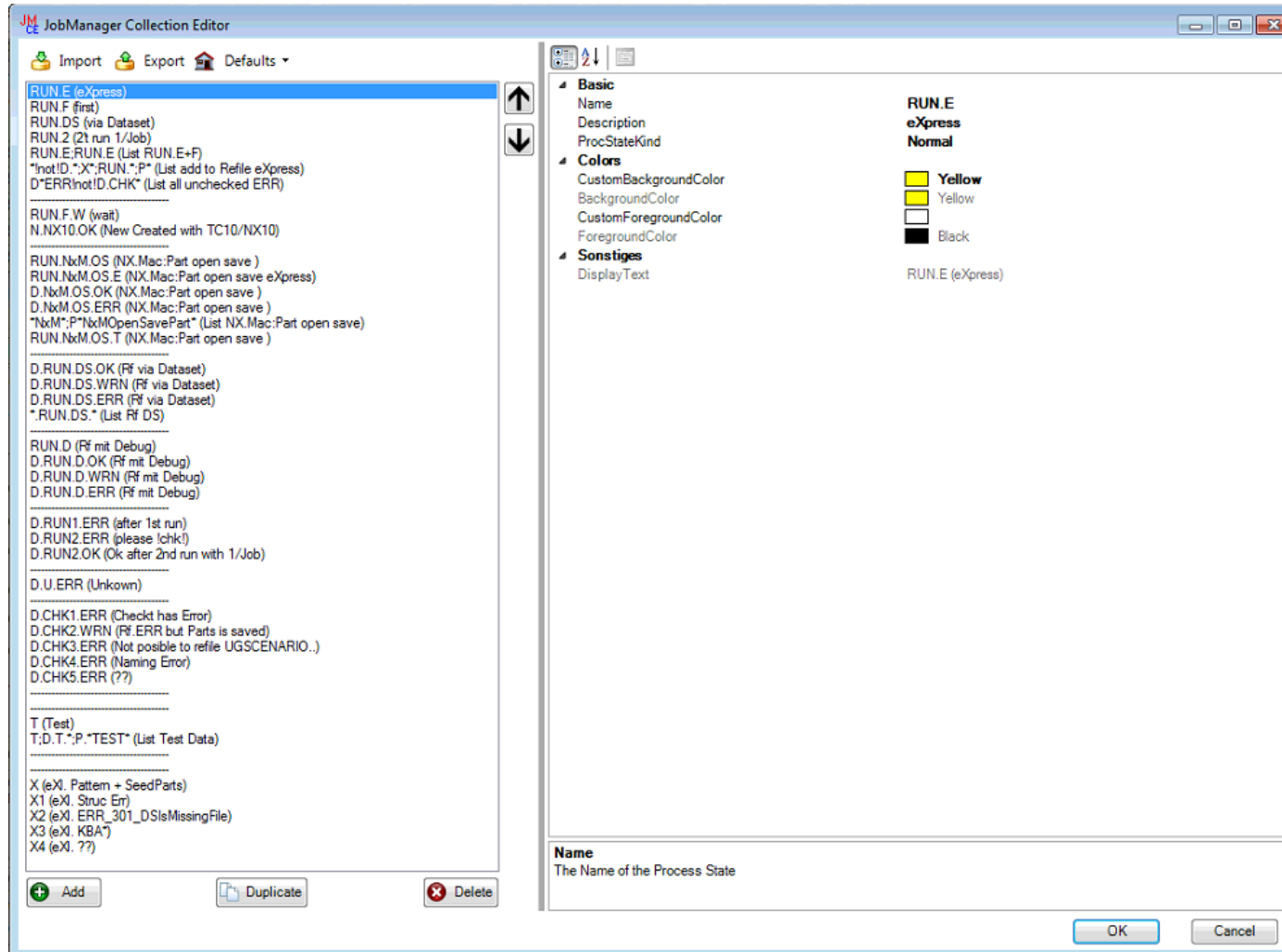
NX10.5 Settings

■ Scripts/Param.

Job Scripts and Parameters:					
Script Name	JobScriptDescription	Note	JC.Script(cmd)	JC.Refile.Param	JC.Script(cmd).ParamExt
Rf1LoadCompNO	Rf with Load Comp N	new: 21.07	RefileNX10\ClientScripts\RfCustomStart.Cmd	-keep_volume=yes -update_mod_props=no -r	set UGII_LOAD_OPTIONS_NE=load_options_refile_LoadCompNO.def
Rf1LoadCompNO_DS	Rf Dataset's with Loa	new: 14.07	RefileNX10\ClientScripts\RfCustomStart.Cmd	-keep_volume=yes -update_mod_props=no -r	set UGII_LOAD_OPTIONS_NE=load_options_refile_LoadCompNO.def
Rf2LoadCompAsSaved	Rf with Load Comp A	new: 17.03	RefileNX10\ClientScripts\RfCustomStart.Cmd	-keep_volume=yes -update_mod_props=no -r	set UGII_LOAD_OPTIONS_NE=load_options_refile_LoadCompAsSaved.def
Rf2LoadCompAsSaved_DS	Rf Datasets with Load	new: 14.07	RefileNX10\ClientScripts\RfCustomStart.Cmd	-keep_volume=yes -update_mod_props=no -r	set UGII_LOAD_OPTIONS_NE=load_options_refile_LoadCompAsSaved.def
Rf6NxMOpenClosePart	NXMacro open close		NxMacroExecute\ClientScripts\NxMacroExecute_C		set NXMacroTemplate_DPNE=#JobScriptTemplate_DP#\NXMacros\NXMacro_Ac
Rf6NxMOpenSavePart	NXMacro save active	New	NxMacroExecute\ClientScripts\NxMacroExecute_C		rem #Doc: Partial Path to macro
Rf7LoadCompDebug	Rf for AP Debug		RefileNX10\ClientScripts\RfCustomStart.Cmd	-keep_volume=yes -update_mod_props=yes -	set UGII_LOAD_OPTIONS_NE=load_options_refile_LoadCompAsSaved.def
Rf9Test	Refile Test	new: 17.03	RefileNX10\ClientScripts\RfCustomStart.Cmd	-keep_volume=yes -update_mod_props=no -r	set UGII_LOAD_OPTIONS_NE=load_options_refile_LoadCompAsSaved.def

NX10.5 Settings

■ Scripts/Param.



NX10.5 Settings

■ Job Control

JobControl Rules:												
J.Order	J.Aktiv	J.JobName	J.Description	J.Script/Para	Note	J.Res.P.State Value Rule	J.on Comp	P.Stat(N,M,A)	J.Pac			
1-Rf00	<input type="checkbox"/>	RfTCPurgeDatasetsM2K	Rf TC Purge Data	TCPurgeDatasetsM2	New: [28.01.16	WCAD1120	RUN.K1 (Keep...	300				
1-Rf01	<input type="checkbox"/>	Rf01SpLoadCompAsSav	Rf SP eXpress (s	Rf2LoadCompAsSav	New: [11.12.15	WCAD1300	RUN.E (eXpres...	100				
1-Rf02	<input type="checkbox"/>	Rf02ApLoadCompAsSav	Rf AP eXpress Lo	Rf2LoadCompAsSav	New: [11.12.15	WCAD1300	RUN.E (eXpres...	50				
1-Rf03	<input type="checkbox"/>	Rf03ApLoadCompNO_R	Rf AP eXpress Lo	Rf1LoadCompNO	New: [11.12.15	WCAD1300	RUN.E (eXpres...	30				
1-Rf11	<input type="checkbox"/>	Rf11SpLoadCompNo_Ru	Rf SP via Dataset	Rf1LoadCompNO_D	New: [14.07.15	*.3	RUN.DS (via D...	5				
1-Rf12	<input type="checkbox"/>	Rf12ApLoadCompNo_Ru	Rf AP via Dataset	Rf1LoadCompNO_D	New: [14.07.15	*.3	RUN.DS (via D...	5				
1-Rf21	<input type="checkbox"/>	Rf21SpLoadCompNO_R	Rf SP LoadComp	Rf1LoadCompNO	New: [05.12.15	*	RUN.2 (2't run...	1				
1-Rf22	<input type="checkbox"/>	Rf22ApLoadCompNO_R	Rf AP LoadComp	Rf1LoadCompNO	New: [05.12.15	*	RUN.2 (2't run...	1				
1-Rf31	<input type="checkbox"/>	Rf31SpLoadCompAsSav	Rf SP (select:RU	Rf2LoadCompAsSav	New: [17.03.15	WCAD1300	RUN.F (first)	100				
1-Rf32	<input type="checkbox"/>	Rf32ApLoadCompAsSav	Rf AP LoadComp	Rf2LoadCompAsSav	New: [26.11.15	WCAD1300	RUN.F (first)	50				
1-Rf33	<input type="checkbox"/>	Rf33ApLoadCompNO_R	Rf AP LoadComp	Rf1LoadCompNO	New: [26.11.15	WCAD1300	RUN.F (first)	20				
1-Rf41	<input type="checkbox"/>	Rf41SpLoadCompAsSav	Rf SP (select:N)	Rf2LoadCompAsSav	New: [22.05.15	WCAD1300	N (not.Proc.)	150				
1-Rf42	<input checked="" type="checkbox"/>	Rf42ApLoadCompAsSav	Rf AP LoadComp	Rf2LoadCompAsSav	New: [10.07.15	WCAD1300	N (not.Proc.)	50				
1-Rf43	<input type="checkbox"/>	Rf43ApLoadCompNO_N	Rf AP LoadComp	Rf1LoadCompNO	New: [04.08.15	xWCAD130	N (not.Proc.)	50				
1-Rf61	<input type="checkbox"/>	Rf61NxMOpenSavePart_	Rf eXpress via N	Rf6NxMOpenSavePa	New: [29.12.15	WCAD1300	RUN.NxM.OS...	1				
1-Rf62	<input type="checkbox"/>	Rf62NxMOpenSavePart_	Rf via NX.Macro	Rf6NxMOpenSavePa	New: [30.07.15	WTCAD112	RUN.NxM.OS (...)	1				
1-Rf71	<input type="checkbox"/>	Rf7LoadCompDebug_RU	Rf AP Debug Issu	Rf7LoadCompDebug	New: [04.01.16	*	RUN.D (Rf mit...	2				
1-Rf99	<input checked="" type="checkbox"/>	RfTest_T	Refile Test	Rf9Test	New: [16.03.15	*	T (Test)	1				

Refile Method is enhanced

Following enhancement has been done to optimize Refile Process

- Nx.Syslog file is now also scanned → better overview because less need to view Nx.Syslog by Hand
- All analyses are done by JobClient via JobClientCmd Tools → Process time improved because JobClient do the analyses less lost Job's
- Jobs now Automated splitted Owing and Replica Object's → less refile rules required

Section Rf.log Section Nx.Syslog

Ir.Id	O.Na	O.Type	O.P.Rf [Rf]	P	P.Res.Msg	P.Re	P.Res.Rf.Nx.Syslog
000037/A	000037-A	UGMASTER	D.RfBa.OK	0	[Rf:OK] [Rf.Nx.Syslog: LoadUp:OK, LoadDisp:OK, Save:OK, SecEnd:OK]	OK	LoadUp:OK, LoadDisp:OK, Save:OK, SecEnd:OK

1.._Rf20_RefileJob.log

```

0
1 D:\ugs\nx75\UGMANAGER\ugmanager_refile_program.exe -keep_volume=yes -update_mod
2
3 Refiling: 000037/A, Type: master,.....Done.
  
```

1..infodba3d048e2.syslog

```

1085
1086 Loaded and updated part "%UGMGR=V3.2 PH=iiN9BAOMTzDfjB PRH=y$C9BAOMTzDfjB PN=000037 PRN=A
1087 Loaded and displayed "%UGMGR=V3.2 PH=iiN9BAOMTzDfjB PRH=y$C9BAOMTzDfjB PN=000037 PRN=A RT=
1088 Saved components of "%UGMGR=V3.2 PH=iiN9BAOMTzDfjB PRH=y$C9BAOMTzDfjB PN=000037 PRN=A RT=
1089 RM_save_part "%UL=V1.0 PH=iiN9BAOMTzDfjB": CPU time: 0.016 secs, Real time: 0.015 sec
1090 CM_save_part "%UL=V1.0 PH=iiN9BAOMTzDfjB": CPU time: 0.015 secs, Real time: 0.016 sec
1091 EXP_save_part "%UL=V1.0 PH=iiN9BAOMTzDfjB": CPU time: 0.000 secs, Real time: 0.000 se
1092 OCC_save_part "%UL=V1.0 PH=iiN9BAOMTzDfjB": CPU time: 0.000 secs, Real time: 0.000 se
1093 Saved "%UGMGR=V3.2 PH=iiN9BAOMTzDfjB PRH=y$C9BAOMTzDfjB PN=000037 PRN=A RT="has shape" A
1094 Completed save of "%UGMGR=V3.2 PH=iiN9BAOMTzDfjB PRH=y$C9BAOMTzDfjB PN=000037 PRN=A RT=
1095 Closing/deleting "%UGMGR=V3.2 PH=iiN9BAOMTzDfjB PRH=y$C9BAOMTzDfjB PN=000037 PRN=A RT="has
  
```

Refile Section configuration

The screenshot illustrates the configuration of the Refile Section in the addPLM software. The top panel shows the 'Process Groups' tree with 'ProcessGroupRf' selected. The middle panel displays a table of process results with columns for 'Ir.Id', 'O.Na', 'O.Type', 'O.P.Rf', 'P.', 'P.Res.Msg', 'P.Re', and 'P.Res.Rf.Nx.Syslog'. The bottom panel shows the 'ColumnDefinition-Auflistungs-Editor' dialog box for defining the 'P.Res.Rf.Nx.Syslog' column.

Process Groups Tree:

- ProcessGroup10
 - RefileViaDS (active)
- ProcessGroupRf
 - Name: Rf (active)
 - Description: Refile
 - Active: True
 - AvailableInJobPlaner: False
 - UserAccessRules: (Auflistung)
 - UserAccessOk: True
 - UserAccessMsg: not in use
 - ProcStates: (Auflistung)
 - StatusConfig: Set P.Stat=[A] - If P.Stat=[D:N:W] - NOT if P.Stat=[A] -
 - JobPlanerSettings: Obj.Filter=[] - AutoSel.Obj.[] - AutoStart Now:[False] -
 - ColumnDefinitions: (Auflistung)
 - ParameterConfiguration: [ParamsForm:default/none] [Parameters:0]

Process Results Table:

Ir.Id	O.Na	O.Type	O.P.Rf [Rf]	P.	P.Res.Msg	P.Re	P.Res.Rf.Nx.Syslog
000037/A	000037-A	UGMASTER	D.RfBa.OK	0	[Rf: OK] [Rf.Nx.Syslog: LoadUp:OK, LoadDisp:OK, Save:OK, SecEnd:OK]	OK	LoadUp:OK, LoadDisp:OK, Save:OK, SecEnd:OK

ColumnDefinition-Auflistungs-Editor:

Member:

- 0 [ProcessResultMsg] -> [P.Res.Rf]
- 1 [ProcessResultMsg] -> [P.Res.Rf.Nx.Syslog]

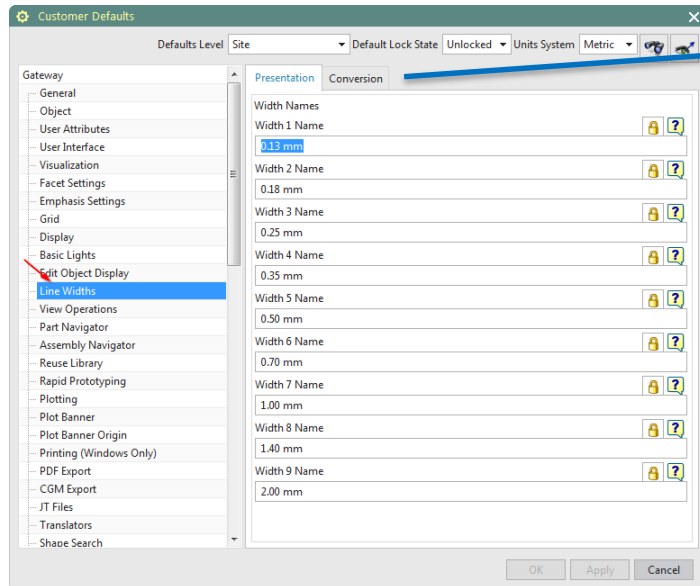
[ProcessResultMsg] -> [P.Res.Rf.Nx.Syslog]-Eigenschaften:

- Column Properties**
 - SourceColumnKey: ProcessResultMsg
 - ColumnHeader: P.Res.Rf.Nx.Syslog
 - ColumnType: String Type
- Content Settings**
 - MatchingPatternType: ResultCategoryMatch
 - MatchCaseSensitive: False
 - SearchPattern: Rf.Nx.Syslog
 - Replacement: .\[Rf\Nx\Syslog\(<result>.*\)\].*
 - ResultingRegExPattern: \$(result)
 - ResultingReplacement: \$(result)
- Formatting**
 - CellFormats: (Auflistung)

Convert Line Width #New:26.11.2015

■ **Before** start working with NX10 or Refiling you need to setup your customer default setting regarding converting linewidth of your legacy Data

Setup definition of your default line width



Picture below shows **Siemens default** 'Line Width Conversion' settings



Regarding to most **customers** it makes sense to use the following settings:



Hint:

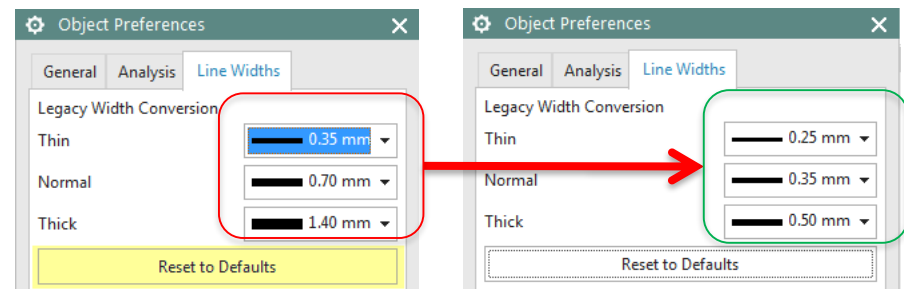
Setting must be defined in your customer defaults **before** usage of NX10 because NX **stores** 'Line Width Conversion rules' **in the NX Part** during **first** opening a Part.

When a user changes later the Object Linewidth then user gets the convert setting that was first stored in the NX Part.

Hint:

If You need to reset the Defaults you can use the following Dialog to reset the default line width conversion setting.

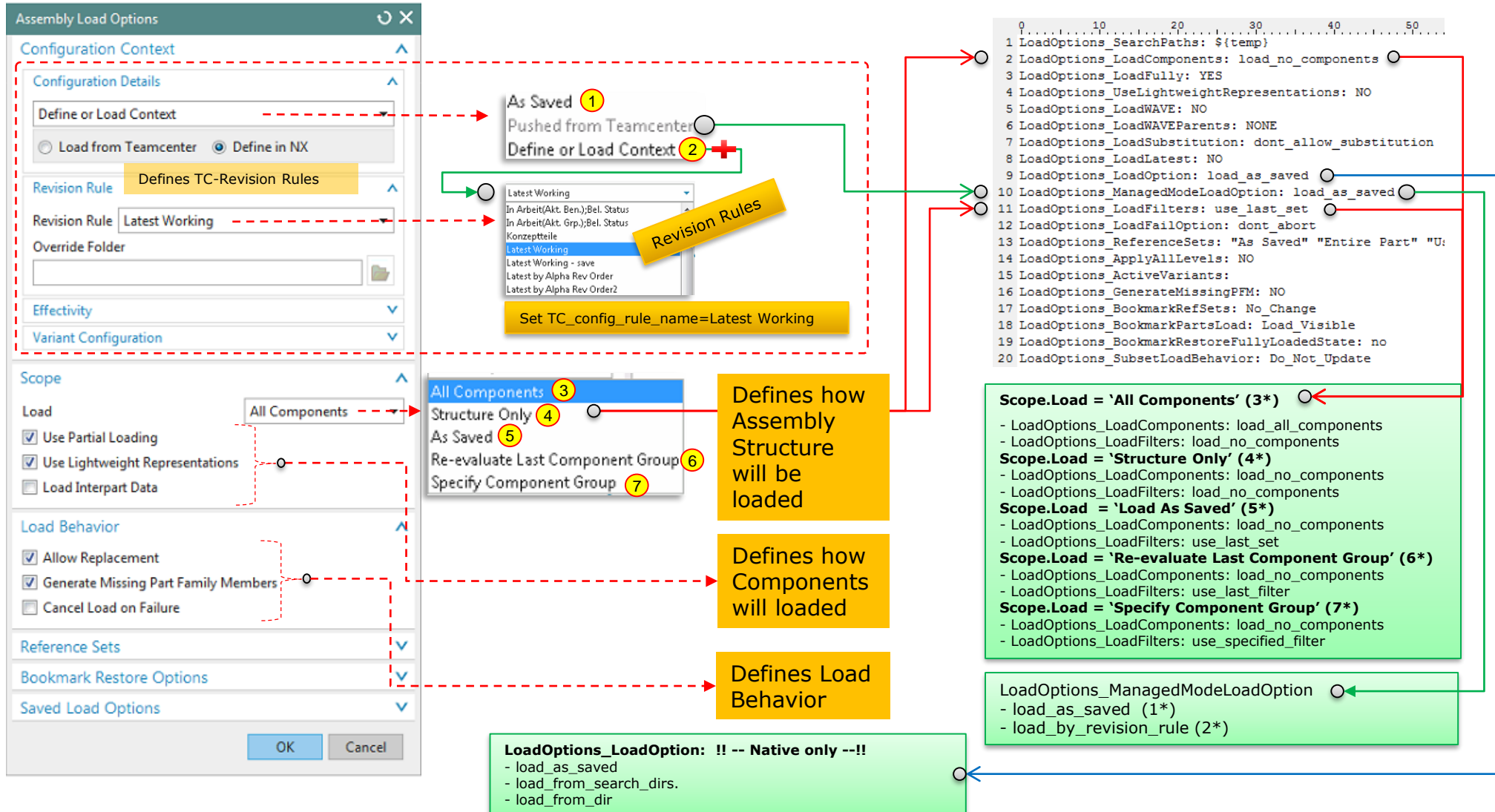
Preferences → Object →



NX Load Options #New 23.02.2016 #Lup: 01.11.2016

User interface and details in 'Load option file'

'Load option file'



Load Options for Refile

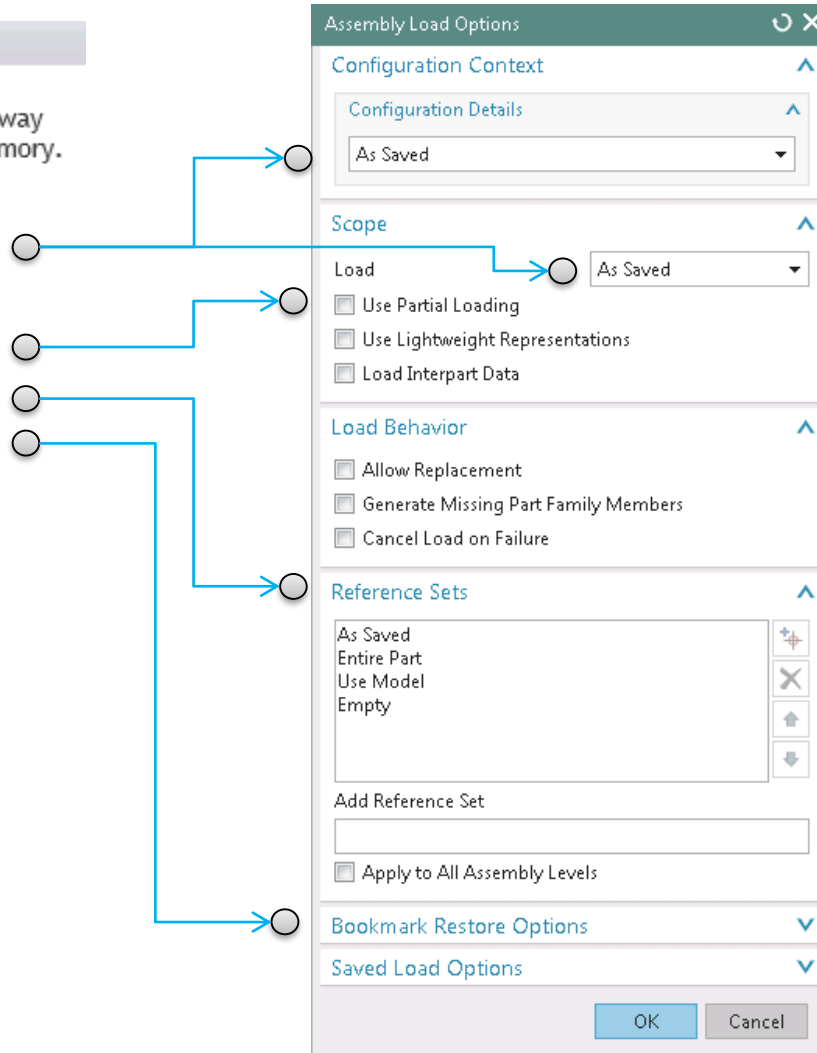
■ Details about 'NX documentation' and 'Assembly Load Options'

Assembly Load Options

Use the Assembly Load Options command to configure the way components of the part you are opening are loaded into memory.

For example, you can specify:

- How to load parts with multiple versions or revisions.
- Where to find components when you work in native NX.
- Whether to load components fully or partially.
- Which default reference sets are loaded.
- How assembly bookmark files are loaded.



Load Options for Refile

■ Details about used Refile Load Options: ..\ClientScripts\startup\load_options_refile_LoadCompAsSaved.def

Assembly Load Options

Configuration Context

Configuration Details

As Saved

Scope

Load

☒ Use Partial Loading

☒ Use Lightweight Representations

☐ Load Interpart Data

Load Behavior

☐ Allow Replacement

☐ Generate Missing Part Family Members

☐ Cancel Load on Failure

Reference Sets

As Saved
Use Model
Entire Part
Empty

Add Reference Set

☐ Apply to All Assembly Levels

Bookmark Restore Options

Saved Load Options

OK Cancel

```

0      10      20      30      40      50      60      70
1 LoadOptions_SearchPaths: {$temp}
2 LoadOptions_LoadComponents: load_no_components
3 LoadOptions_LoadFully: NO
4 LoadOptions_UseLightweightRepresentations: YES
5 LoadOptions_LoadWAVE: NO
6 LoadOptions_LoadWAVEParents: NONE
7 LoadOptions_LoadSubstitution: dont_allow_substitution
8 LoadOptions_LoadLatest: NO
9 LoadOptions_LoadOption: load_from_dir
10 LoadOptions_ManagedModeLoadOption: load_as_saved
11 LoadOptions_LoadFilters: use_last_set
12 LoadOptions_LoadFailOption: dont_abort
13 LoadOptions_ReferenceSets: "As Saved" "Use Model" "Entire Part" "Empty"
14 LoadOptions_ApplyAllLevels: NO
15 LoadOptions_ActiveVariants:
16 LoadOptions_GenerateMissingPFM: NO
17 LoadOptions_BookmarkRefSets: No_Change
18 LoadOptions_BookmarkPartsLoad: Load_Visible
19 LoadOptions_BookmarkRestoreFullyLoadedState: no
20 LoadOptions_SubsetLoadBehavior: Do_Not_Update
  
```


Load Options for Refile

■ Details about used Refile Load Options: ..\ClientScripts\startup\load_options_LatestWorking.def

Assembly Load Options

Configuration Context

Configuration Details

Define or Load Context

☐ Load from Teamcenter ☒ Define in NX

Revision Rule

Revision R: Latest Working

Override Folder

Effectivity

Variant Configuration

Scope

Load: As Saved

☒ Use Partial Loading

☒ Use Lightweight Representations

☐ Load Interpart Data

Load Behavior

☐ Allow Replacement

☐ Generate Missing Part Family Members

☐ Cancel Load on Failure

Reference Sets

As Saved
Use Model
Entire Part
Empty

Add Reference Set

☐ Apply to All Assembly Levels

Bookmark Restore Options

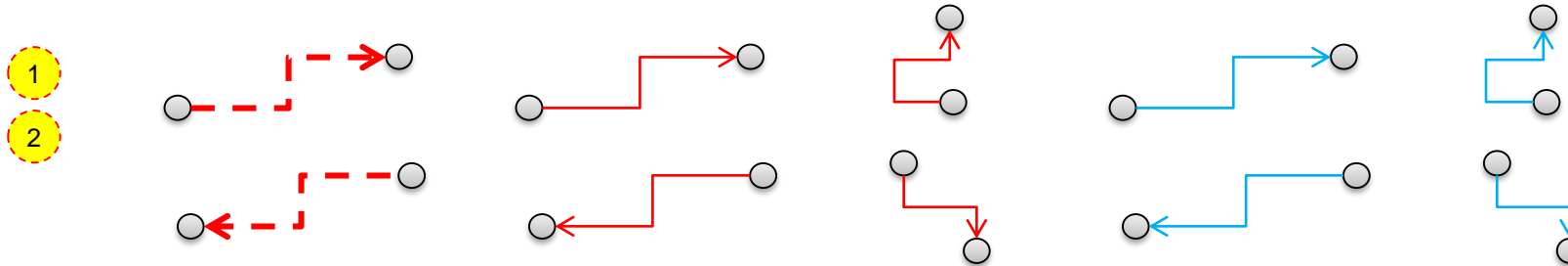
OK Cancel

```

1 LoadOptions_SearchPaths: {$temp}
2 LoadOptions_LoadComponents: load_no_components
3 LoadOptions_LoadFully: NO
4 LoadOptions_UseLightweightRepresentations: YES
5 LoadOptions_LoadWAVE: NO
6 LoadOptions_LoadWAVEParents: NONE
7 LoadOptions_LoadSubstitution: dont_allow_substitution
8 LoadOptions_LoadLatest: NO
9 LoadOptions_LoadOption: load_from_dir
10 LoadOptions_ManagedModeLoadOption: load_by_revision_rule
11 LoadOptions_LoadFilters: use_last_set
12 LoadOptions_LoadFailOption: dont_abort
13 LoadOptions_ReferenceSets: "As Saved" "Use Model" "Entire Part" "Empty"
14 LoadOptions_ApplyAllLevels: NO
15 LoadOptions_ActiveVariants:
16 LoadOptions_GenerateMissingPFM: NO
17 LoadOptions_BookmarkRefSets: Import
18 LoadOptions_BookmarkPartsLoad: Load_Visible
19 LoadOptions_BookmarkRestoreFullyLoadedState: no
20 LoadOptions_SubsetLoadBehavior: Do_Not_Update
  
```

Set TC_config_rule_name=Latest Working

Hilfsmittel - Designs



XX	XX
XX	XX
XX	XX
XX	XX
XX	XX
XX	XX
XX	XX