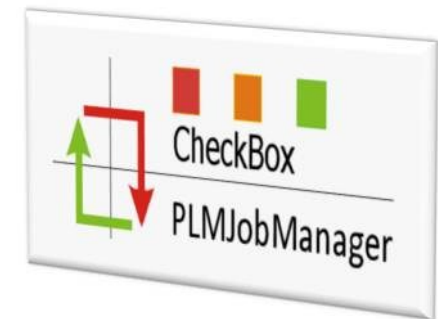
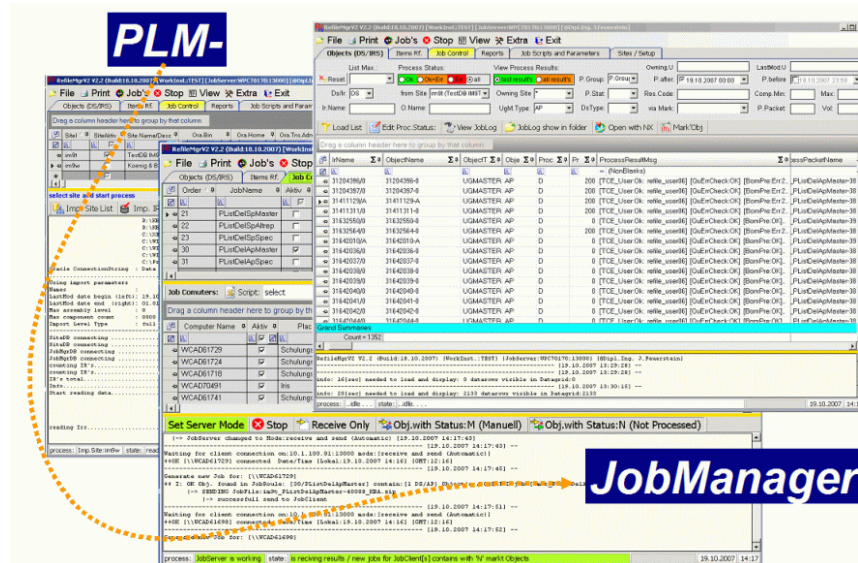


## \* CheckBox \*



# PLMJobManager - CheckBox

## User Docu: ‚Setup‘ and ‚Usage‘

Erstellt von: Josef Feuerstein

# Inhaltsverzeichnis

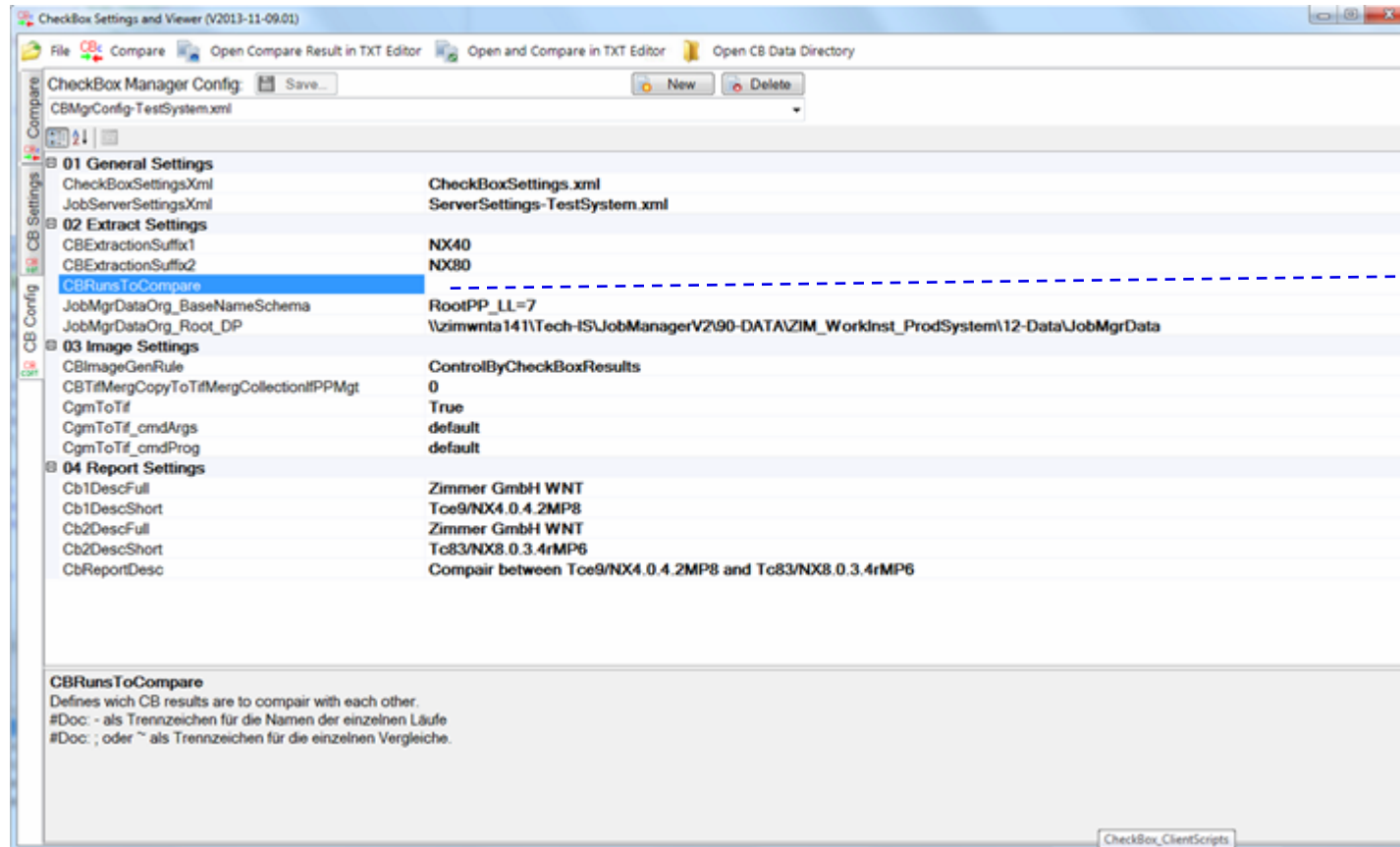
[Config and Setup](#)

[Define CB Process Extract Data 1](#)

Folie: 4

Folie: 5

# Config and Setup



-> Optional

# Define CB Process Extract Data 1

Objects List   Job Control   Task Scheduler   Reports   Scripts/Param.   Process Groups   Sites/Data Import				
Job Scripts and Parameters:				
Script Name	JobScriptDescription	Note	JC.Script(cmd)	JC.Script(cmd).ParamExt
CB_S1Nx40	CheckBox Step1 Get NX4.0 Data	eingetr. 17.08.2012	CheckBox\ClientScripts\CheckBox_CustomStart.	<pre> rem --- defines CheckBox Action: "NxCB_Extract" / "ResultGen" SET CB_Action=NxCB_Extract  rem --- define if NX is Running "TC" or in "NATIVE" Environ SET NxCB_UsingEnviron=TC rem --- defines Use of NXver SET CB_VerUse=VER1  rem --- defines Use of NXver rem entn. 12.11.13/J.Fes rem SET CB_Ver1=#NX40 rem SET CB_Ver2=#NX80 rem SET CB_VerUse=VER1 rem entn. 12.11.13/J.Fes rem SET NxCB_UseNxVer=#NX40  rem --- CheckBox Param's Update auf V2.0.1.5 18.4.2013 / J.Fes set NxCB_program_exe_NE=NxCheckBox_32_bit_Nx4-7_V2.0.1.5.exe  rem set NxCheckBox_JobPara=-UpdateAllFeatures rem set NxCheckBox_JobPara=%NxCheckBox_JobPara% -StrukturSync rem set NxCheckBox_JobPara=%NxCheckBox_JobPara% -UpdateAllViews rem set NxCheckBox_JobPara=-DetailOption=25,26 rem 18.03.2013 disable 25 set NxCheckBox_JobPara=-DetailOption=26 set NxCheckBox_JobPara=%NxCheckBox_JobPara% -UpdateAllFeatures set NxCheckBox_JobPara=%NxCheckBox_JobPara% -UpdateAllViews  set JobParameter=%NxCheckBox_JobPara%  rem --- Load Options steuern --- set UGII_LOAD_OPTIONS_NE=load_options_LoadAsSaved.def </pre>